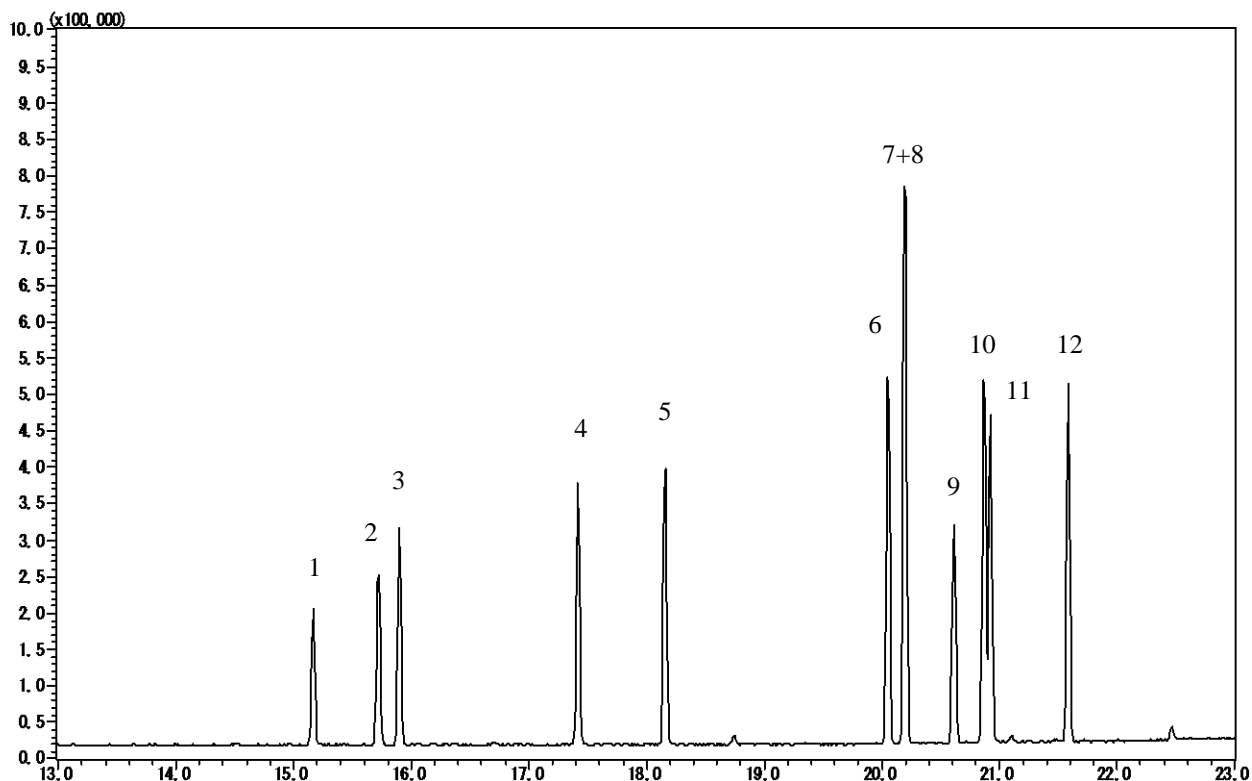


# InertSearch™ for GC

InertCap® Applications

## Organochlorine Pesticide

Data No. GA130-0644



### Conditions

**System** : GC/MS  
**Column** : InertCap 5MS/Sil  
0.25 mm I.D. x 30 m df = 0.25  $\mu$ m  
**Col. Cat. No.** : 1010-15142  
**Col. Temp.** : 60 °C(1 min hold) - 10 °C/min - 280 °C (7 min hold)  
**Carrier Gas** : He 35 cm/sec  
**Injection** : Split 1:30  
250 °C  
**Detection** : MS Scan (45 – 500 m/z)  
Interface Temp. 280 °C  
**Sample Size** : 100  $\mu$ g/mL in Isooctane  
1  $\mu$ L

**Analyte** : 1.  $\alpha$ -HCH  
2.  $\beta$ -HCH  
3.  $\gamma$ -HCH  
4. Heptachlor  
5. Aldrin  
6. p,p'-DDE  
7. Dieldrin  
8. o,p'-DDD  
9. Endrin  
10. p,p'-DDD  
11. o,p'-DDT  
12. p,p'-DDT