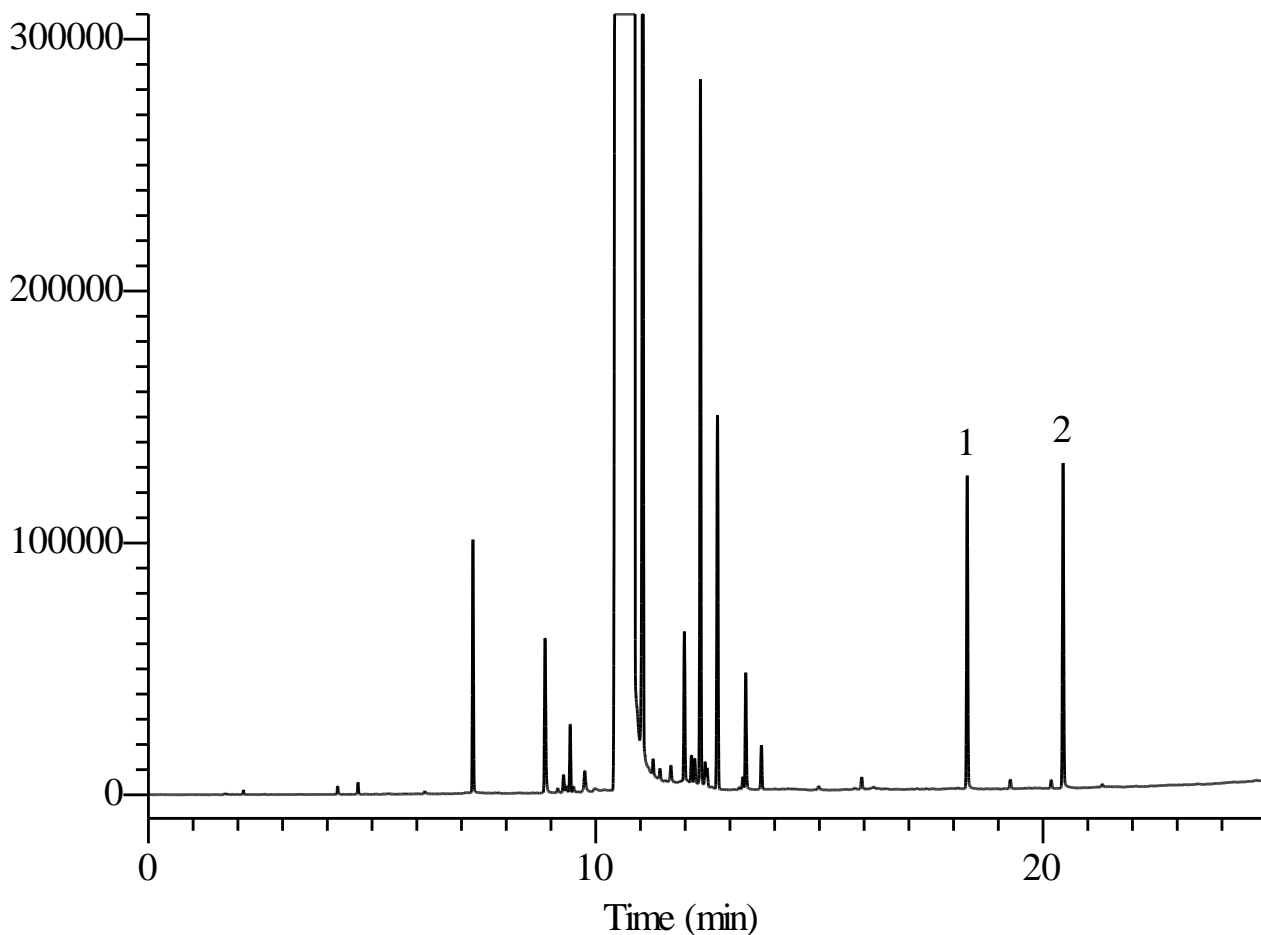


InertSearch™ for GC

InertCap® Applications

Higher Alcohols

Data No. GA134-0850



Conditions

System : GC/FID
Column : InertCap 5
0.25 mm I.D. x 30 m df = 0.25 µm
Col. Cat. No. : 1010-18142
Col. Temp. : 50 °C - 10 °C/min - 325 °C
Carrier Gas : He 100 kPa
Injection : Split flow 100 mL/min
325 °C
Detection : FID Range 10⁰
325 °C
Sample Size : 1.0 mg/mL in 1-Decanol
0.5 µL

Chemical Structure



1. Cetyl alcohol



2. Stearyl alcohol

Analyte : 1. Cetyl alcohol
2. Stearyl alcohol

Structures are created using Chemistry 4-D Draw which is provided by ChemInnovayion Software, Inc.