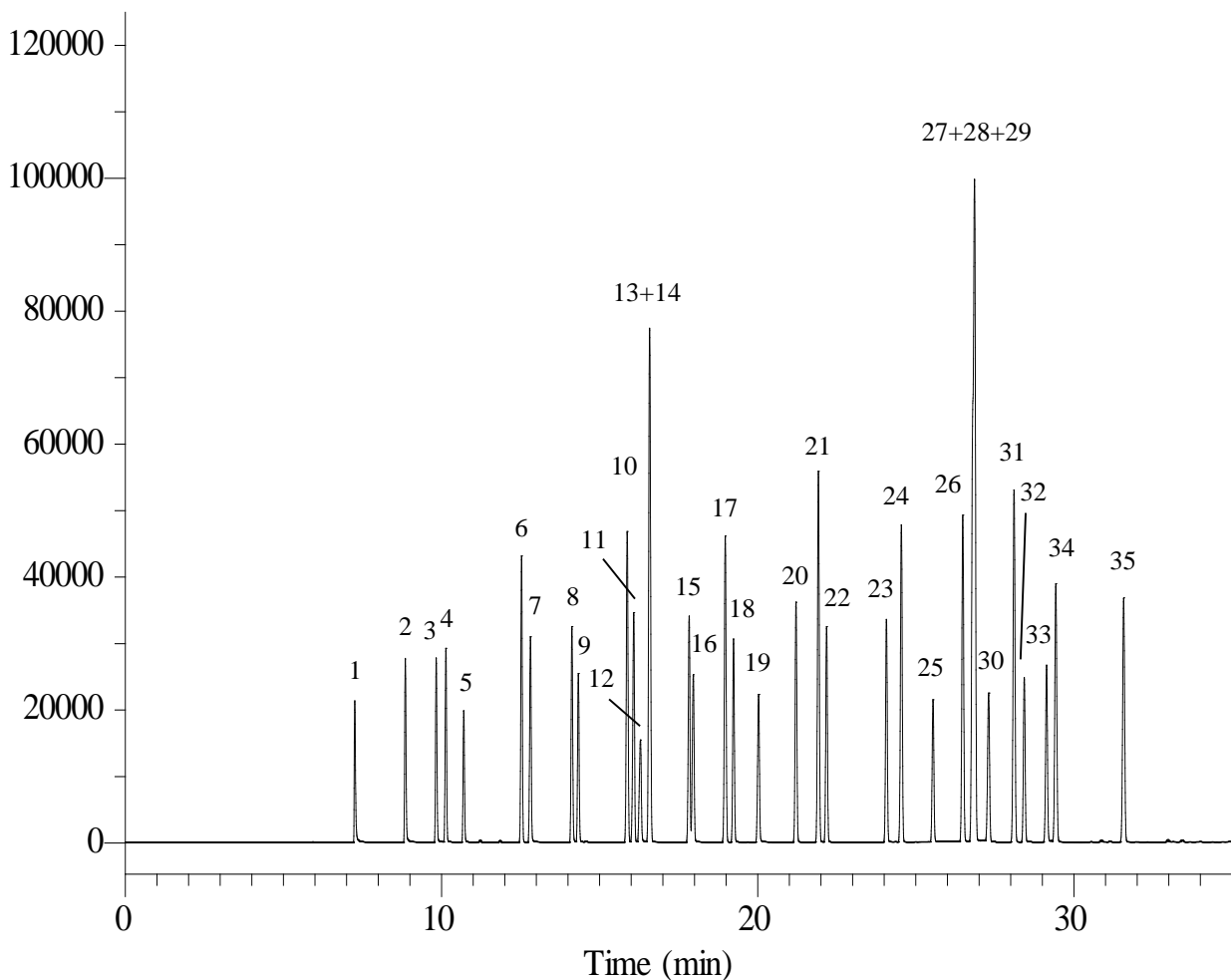


InertSearch™ for GC

InertCap® Applications

Organic Solvents

Data No. GA138-0644



Conditions

System : GC/FID
Column : InertCap 1301
0.25 mm I.D. x 60 m df = 1.0 µm
Col. Cat. No. : 1010-60165
Col. Temp. : 40 °C (5 min hold) - 5 °C/min - 200 °C
Carrier Gas : He 160 kPa
Injection : Split flow 100 mL/min
200 °C
Detection : FID Range 10¹
200 °C
Sample Size : Mixed evenly
0.2 µL

Organic Solvents

Data No. GA138-0644

Analyte :

- | | |
|---|---|
| 1. Methanol | 19. 2-Ethoxyethanol(Cellosolve) |
| 2. Ethanol | 20. 4-Methyl-2-pentanone(MIBK) |
| 3. Acetone | 21. Toluene |
| 4. 2-Propanol(Isopropyl alcohol) | 22. Isobutyl acetate |
| 5. Methyl acetate | 23. n-Butyl acetate |
| 6. n-Hexane | 24. Ethylcyclohexane |
| 7. 1-Propanol | 25. 2-Methoxyethyl acetate
(Methyl cellosolve acetate) |
| 8. 2-Butanone(MEK) | 26. Ethylbenzene |
| 9. Ethyl acetate | 27. 1-Methoxy-2-propyl acetate
(Propylene glycol monomethyl ether acetate) |
| 10. Cyclohexane | 28. m-Xylene |
| 11. 2-Methyl-1-propanol(Isobutyl alcohol) | 29. p-Xylene |
| 12. 2-Methoxyethanol(Methyl cellosolve) | 30. Diacetone alcohol |
| 13. Benzene | 31. o-Xylene |
| 14. Isopropyl acetate | 32. 2-Ethoxyethyl acetate(Cellosolve acetate) |
| 15. 1-Butanol | 33. 2-Butoxyethanol(Butyl cellosolve) |
| 16. 1-Methoxy-2-propanol
(Propylene glycol monomethyl ether) | 34. Cyclohexanone |
| 17. Methylcyclohexane | 35. 2-Methylcyclohexanone |
| 18. n-Propyl acetate | |