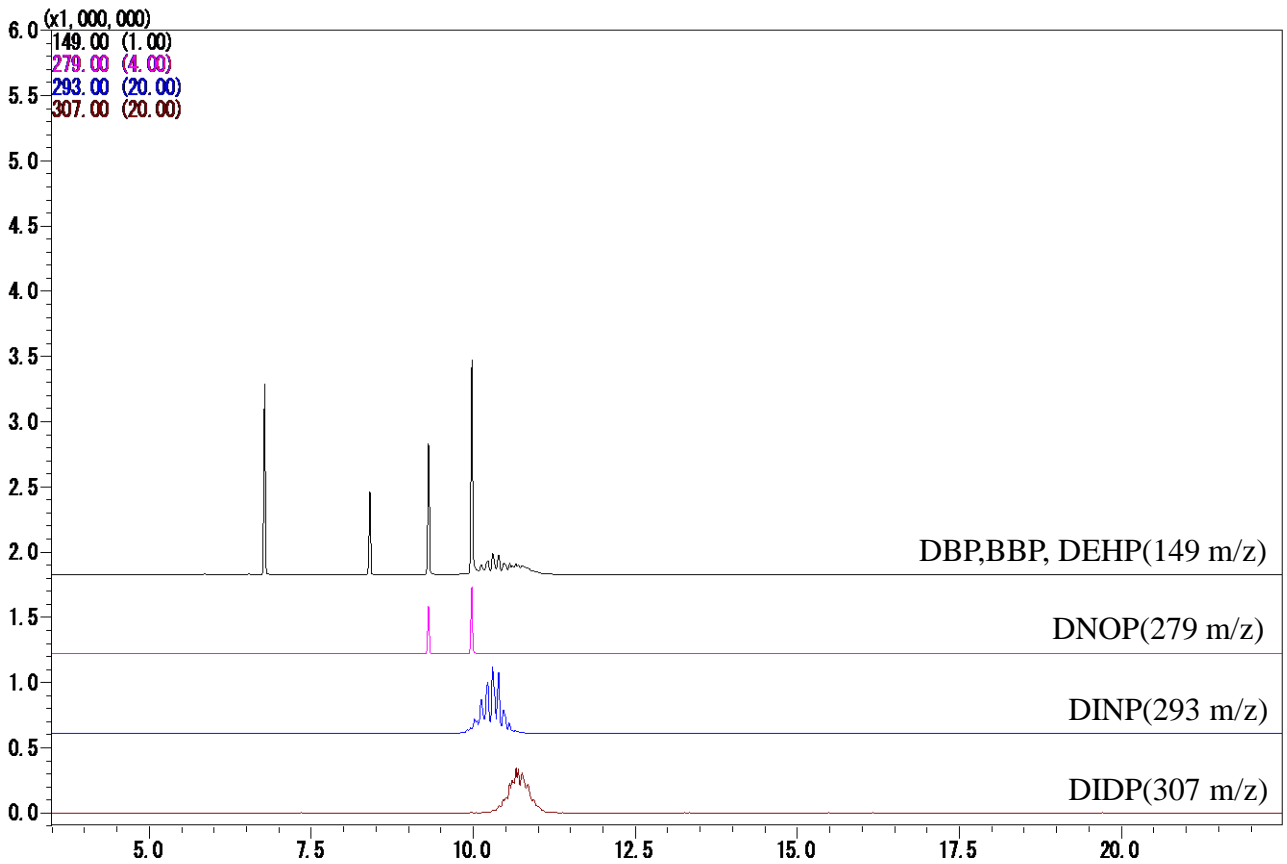
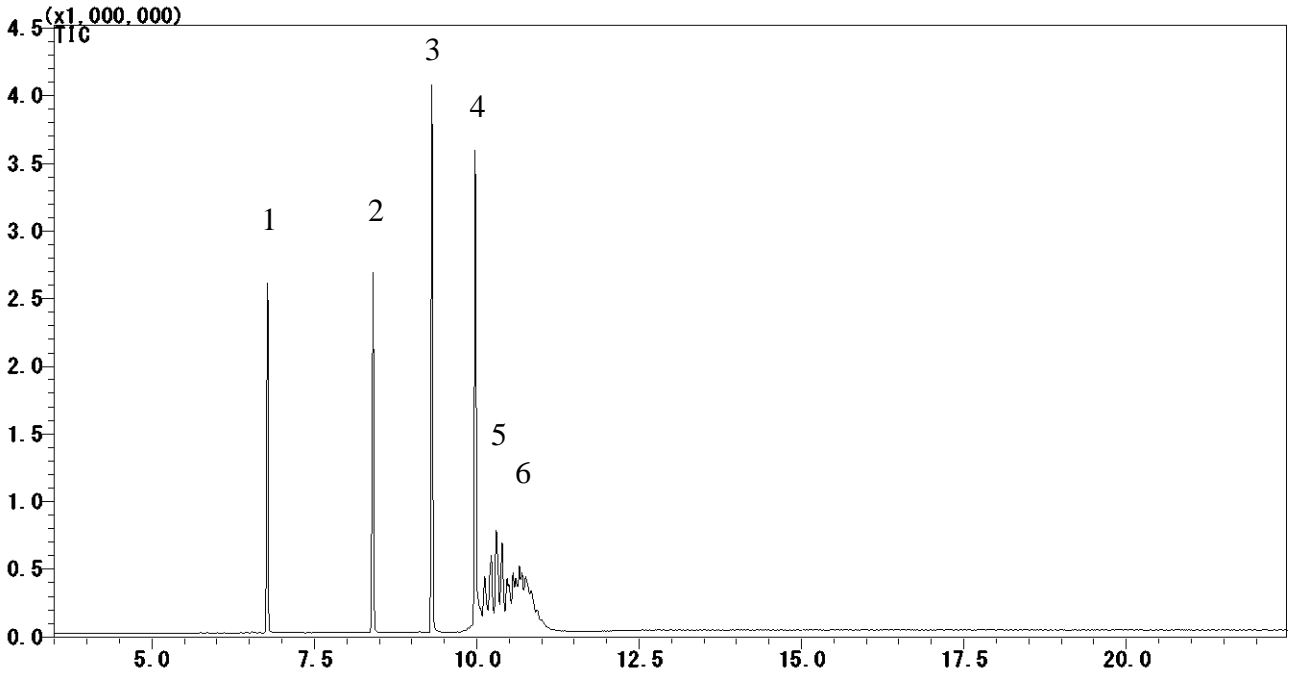


InertSearch™ for GC

InertCap® Applications

Phthalic acid esters

Data No. GA146-0875



InertSearch™ for GC

InertCap® Applications

Phthalic acid esters

Data No. GA146-0875

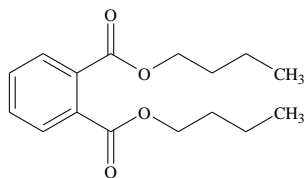
Conditions

System	: GC/MS
Column	: InertCap 1MS (Tailor-made column) 0.25 mm I.D. x 15 m df = 0.10 µm
Col. Temp.	: 50 °C - 20 °C/min - 300 °C
Carrier Gas	: He 60 cm/sec
Injection	: Split flow 54.3 mL/min 280 °C
Detection	: MS Scan (45 - 500 m/z) Interface Temp. 300 °C
Sample Size	: 1000 µg/mL in Hexane 1.0 µL

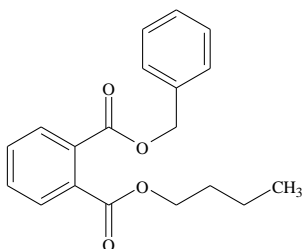
Analyte :

1. Di-*n*-butyl phthalate (DBP)
2. Benzyl butyl phthalate (BBP)
3. Di(2-ethylhexyl) phthalate (DEHP)
4. Di-*n*-octyl phthalate (DNOP)
5. Diisononyl phthalate (DINP)
6. Diisodecyl phthalate (DIDP)

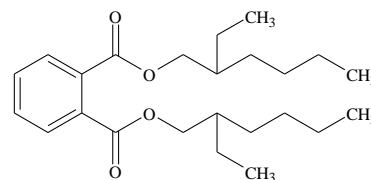
Chemical Structure



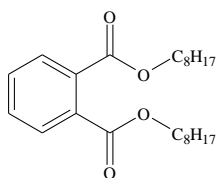
1. Di-*n*-butyl phthalate



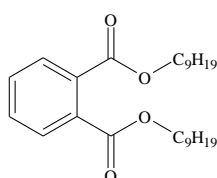
2. Benzyl butyl phthalate



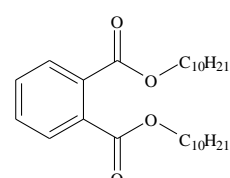
3. Di(2-ethylhexyl) phthalate



4. Di-*n*-octyl phthalate



5. Diisononyl phthalate



6. Diisodecyl phthalate

Structures are created using Chemistry 4-D Draw which is provided by ChemInnovation Software, Inc.