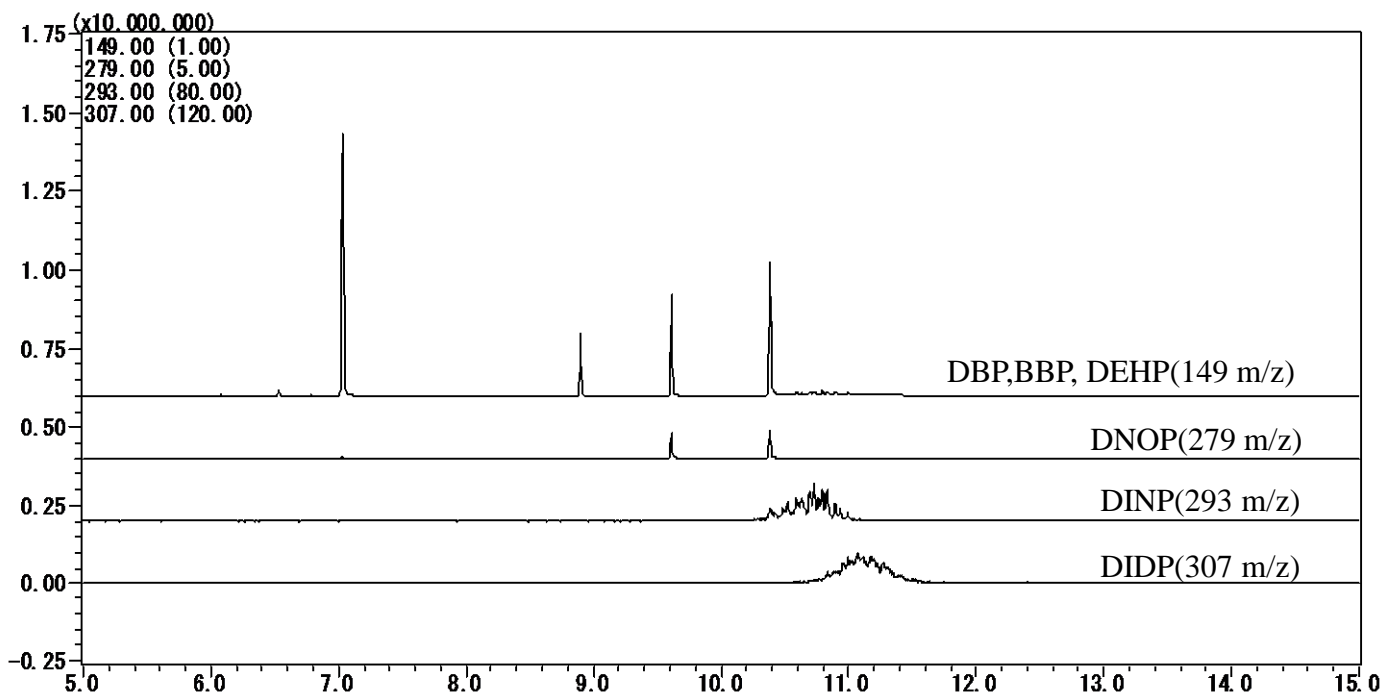
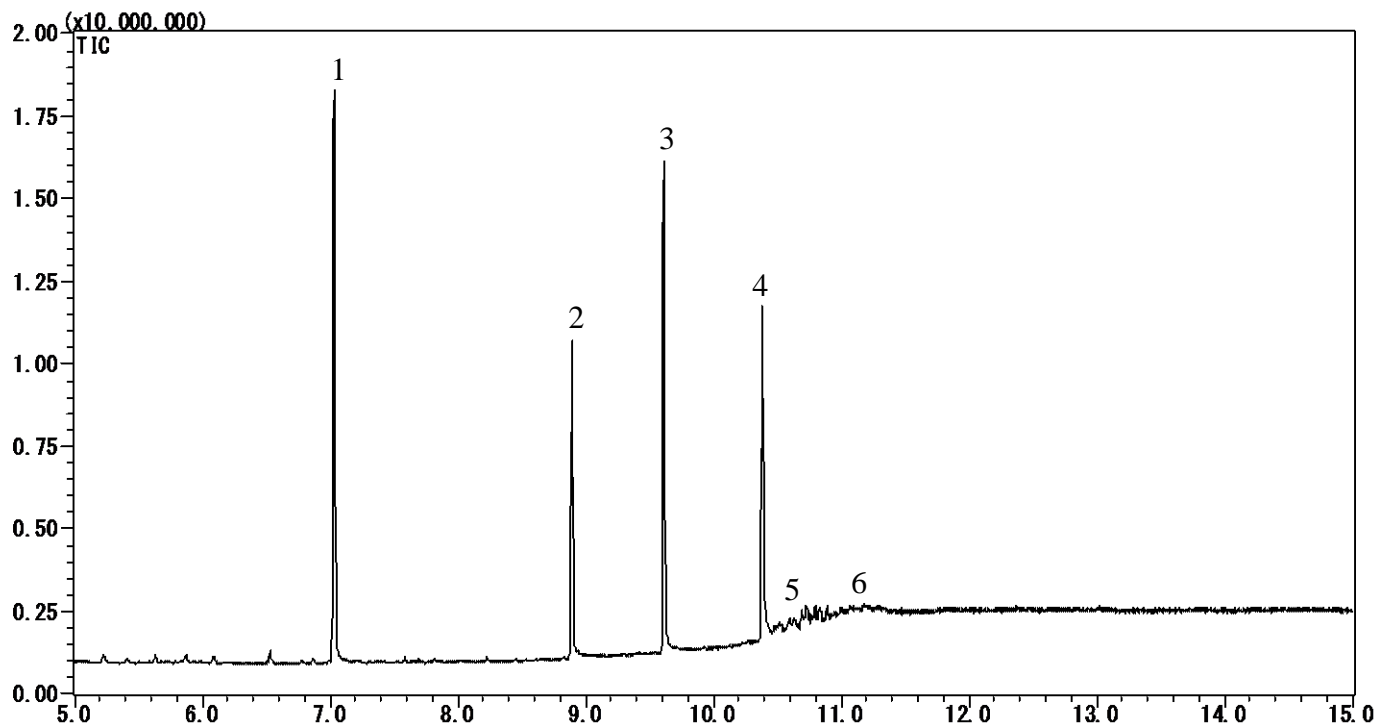


# InertSearch™ for GC

InertCap® Applications

## Phthalic acid esters

Data No. GA152-0155



# InertSearch™ for GC

InertCap® Applications

## Phthalic acid esters

Data No. GA152-0155

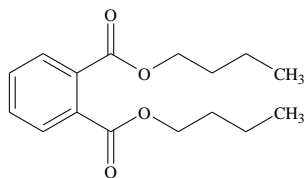
### Conditions

System	: GC/MS
Column	: InertCap 5MS/Sil 0.25 mm I.D. x 30 m df = 0.25 µm
Col. Cat. No.	: 1010-15142
Col. Temp.	: 50 °C - 20 °C/min - 300 °C
Carrier Gas	: He 4.0 mL/min
Injection	: Splitless 2 min Vent flow 25 mL/min 280 °C
Detection	: MS Scan (30 - 400 m/z) Interface Temp. 300 °C
Sample Size	: 5.0 µg/mL in Hexane 1.0 µL

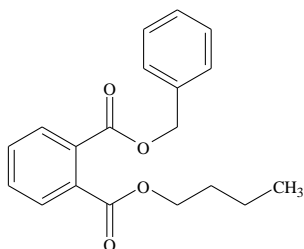
### Analyte :

1. Di-*n*-butyl phthalate (DBP)
2. Benzyl butyl phthalate (BBP)
3. Di(2-ethylhexyl) phthalate (DEHP)
4. Di-*n*-octyl phthalate (DNOP)
5. Diisononyl phthalate (DINP)
6. Diisodecyl phthalate (DIDP)

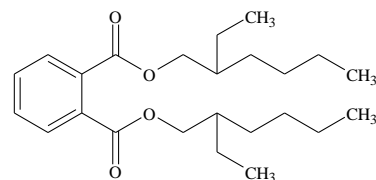
### Chemical Structure



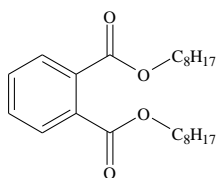
1. Di-*n*-butyl phthalate



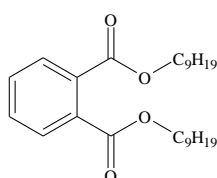
2. Benzyl butyl phthalate



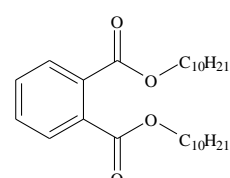
3. Di(2-ethylhexyl) phthalate



4. Di-*n*-octyl phthalate



5. Diisononyl phthalate



6. Diisodecyl phthalate

Structures are created using Chemistry 4-D Draw which is provided by ChemInnovation Software, Inc.