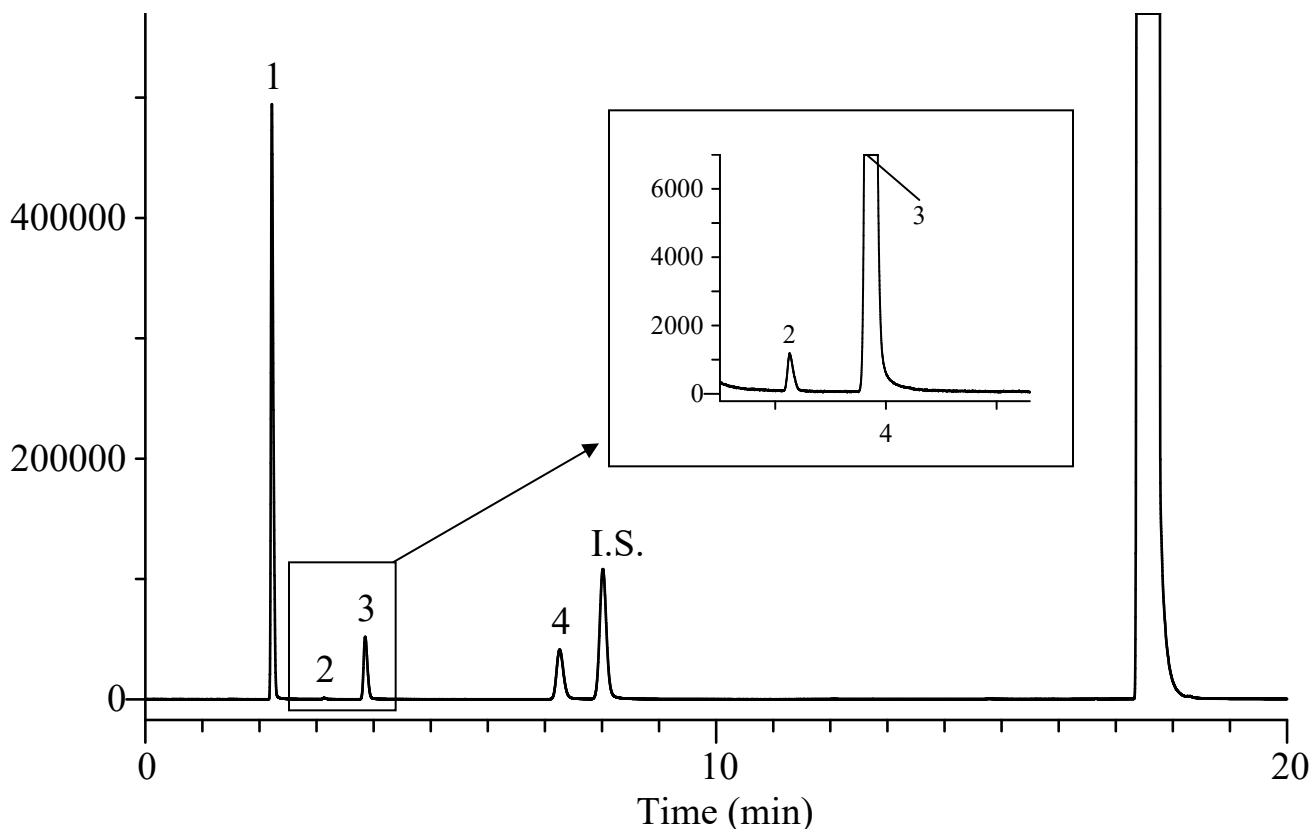


InertSearch™ for GC

InertCap® Applications

Purity test of Epirubicin Hydrochloride by Japanese Pharmacopoeia

Data No. GA166-0850



Conditions

System : GC/FID
Column : InertCap Pure-WAX
0.53 mm I.D. x 30 m df = 1.00 µm
Col.Cat. No. : 1010-68445
Col. Temp. : 40 °C (11 min hold) - 10 °C/min
- 90 °C - 50 °C/min - 130 °C (30 min hold)

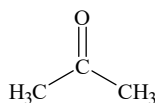
Carrier Gas : He 20 kPa
Injection : Split 1:15
120 °C

Detection : FID Range 10⁴
150 °C

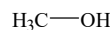
Sample Size : Analyte in *N,N*-Dimethylformamide
1.0 µL

Analyte : 1. Acetone 1.25 µL/mL
2. Methanol 0.0068 µL/mL
3. Ethanol 0.30 µL/mL
4. 1-Propanol 0.32 µL/mL
I.S. 1,4-Dioxane 1.00 µL/mL
*Standard mixture
R(1-I.S.) : 41.0 > 30(JP15)

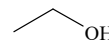
Chemical Structure



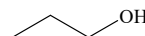
1. Acetone



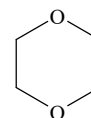
2. Methanol



3. Ethanol



4. 1-Propanol



5. 1,4-Dioxane