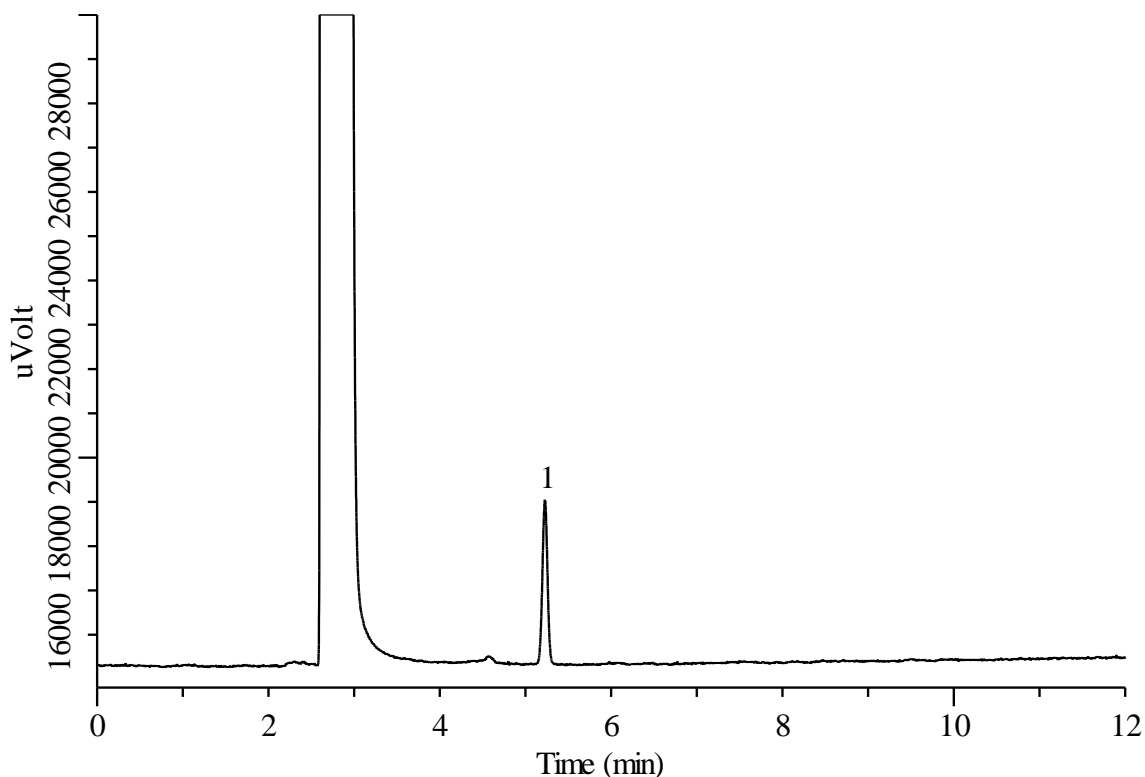


# InertSearch™ for GC

InertCap® Applications

## Methyl methacrylate

Data No. GA170-0904



### Conditions

**System** : GC/FID  
**Column** : InertCap 1  
0.32 mm I.D. x 30 m df = 5.00 µm  
**Col.Cat. No.** : 1010-11249  
**Col. Temp.** : 120 °C (1 min hold) – 5 °C/min –  
170 °C (1 min hold)  
**Carrier Gas** : He 65 kPa  
**Injection** : Split flow 14 mL/min  
200 °C  
**Detection** : FID Range 10<sup>0</sup>  
200 °C  
**Sample Size** : 15 mg/L in 20 % Ethanol solution  
**Analyte** : 1.0 µL Methyl methacrylate