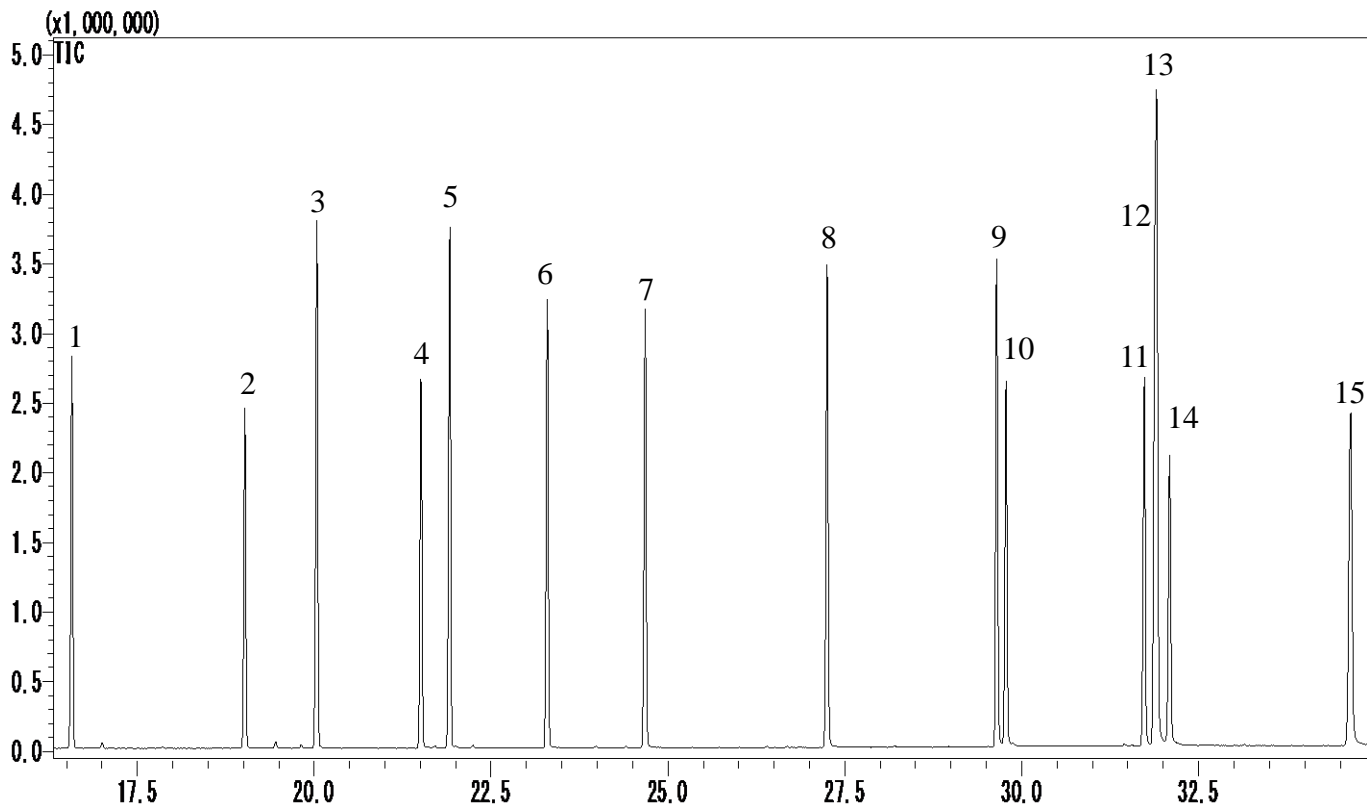


InertSearch™ for GC

InertCap® Applications

Phthalic acid esters

Data No. GA177-0904



Conditions

System : GC/MS

Column : InertCap 5MS/Sil
0.25 mm I.D. x 30 m df = 0.25 µm

Col.Cat. No. : 1010-15142

Col. Temp. : 60 °C(3 min hold) - 7 °C/min - 260 °C(19 min hold)

Carrier Gas : He 36.5 cm/sec

Injection : Splitless 1 min
250 °C

Detection : MS Scan (35 – 500 m/z)
Interface Temp. 280 °C

Sample Size : 10 µg/mL in Acetone
1 µL

Analyte :

1. Dimethyl phthalate
2. Diethyl phthalate
3. Di-isopropyl phthalate
4. Diallyl phthalate
5. Di-*n*-propyl phthalate
6. Di-isobutyl phthalate
7. Di-*n*-butyl phthalate
8. Di-*n*-pentyl phthalate
9. Di-*n*-hexyl phthalate
10. Butylbenzyl phthalate
11. Dicyclohexyl phthalate
12. Di-2-ethylhexyl phthalate
13. Di-*n*-heptyl phthalate
14. Diphenyl phthalate
15. Di-*n*-octyl phthalate