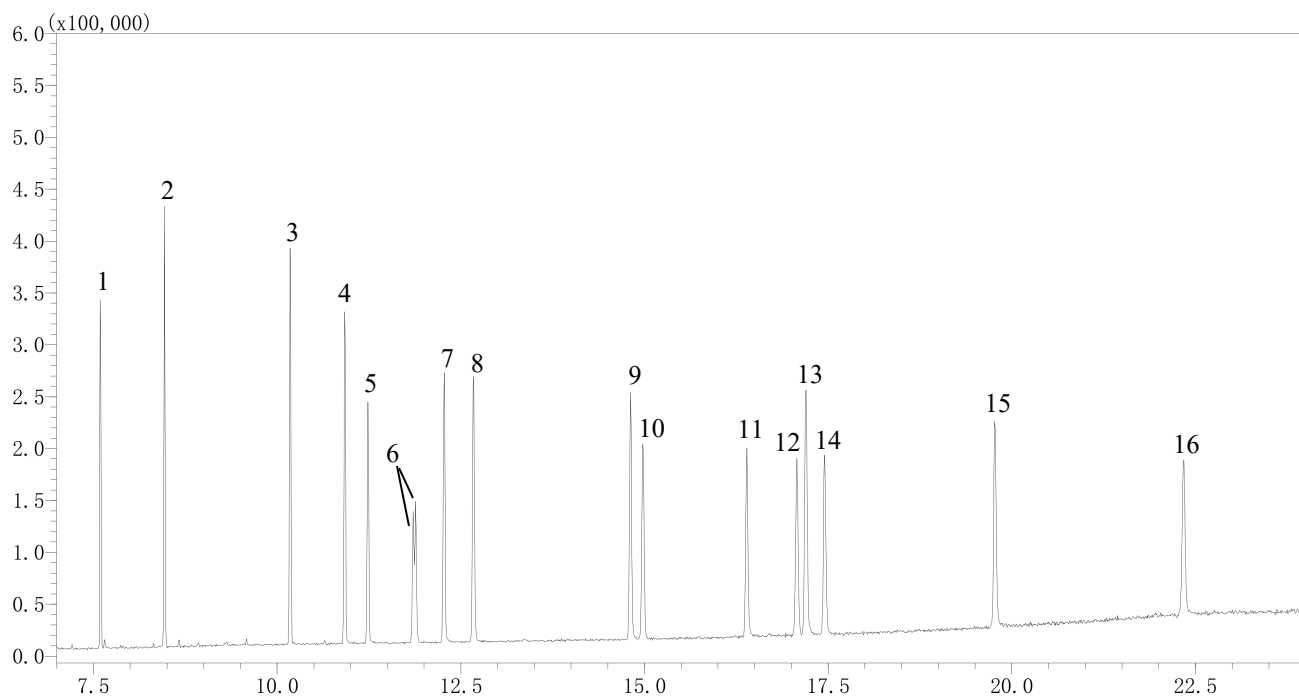


InertSearch™ for GC

InertCap® Applications

Phthalic acid esters by the GB/T 21911-2008

Data No. GA178-0644



Conditions

System : GC/MS
Column : InertCap 5MS/Sil
0.25 mm I.D. x 30 m df = 0.25 µm
Col.Cat. No. : 1010-15142
Col. Temp. : 60 °C(1 min hold) - 20 °C/min - 220 °C
(1 min hold) - 5 °C/min - 280 °C(4 min hold)
Carrier Gas : He 36.5 cm/sec
Injection : Splitless 1 min
250 °C
Detection : MS Scan (35 – 500 m/z)
Interface Temp. 280 °C
Sample Size : 1 µg/mL in Hexane
1 µL

Analyte :

1. Dimethyl phthalate
2. Diethyl phthalate
3. Diisobutyl phthalate
4. Di-*n*-butyl phthalate
5. Bis(2-methoxyethyl)phthalate
6. Bis(4-methyl-2-pentyl)phthalate
7. Bis(2-ethoxyethyl)phthalate
8. Di-*n*-pentyl phthalate
9. Di-*n*-hexyl phthalate
10. Benzyl butyl phthalate
11. Bis(2-*n*-butoxyethyl)phthalate
12. Dicyclohexyl phthalate
13. Di(2-ethylhexyl)phthalate
14. Diphenyl phthalate
15. Di-*n*-octyl phthalate
16. Di-*n*-nonyl phthalate