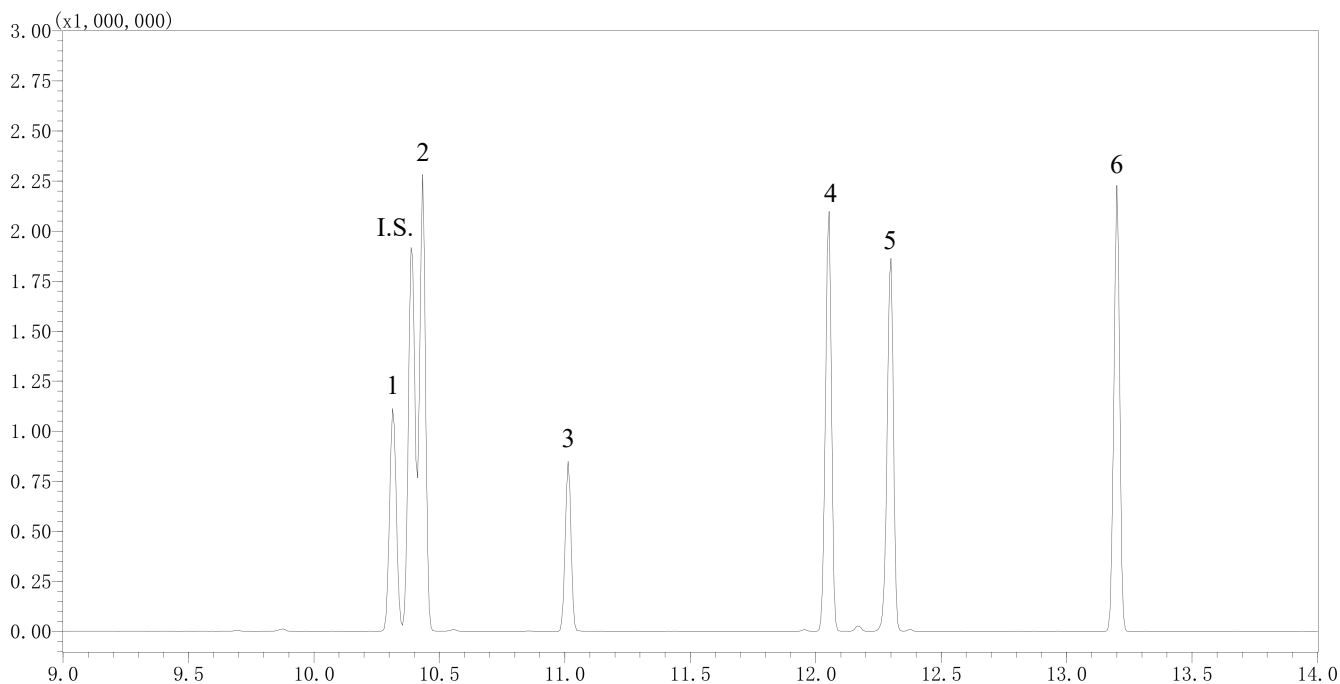


InertSearch™ for GC

InertCap® Applications

Aromatic compounds

Data No. GA 185-0644



Conditions

System : GC/MS
Column : InertCap 5MS/NP
0.25 mm I.D. x 30 m df = 0.25 µm
Col.Cat. No. : 1010-18642
Col. Temp. : 40 °C(1 min hold) - 10 °C/min - 250 °C
Carrier Gas : He 36.5 cm/sec
Injection : Splitless 1min
250 °C
Detection : MS Scan (35 – 400 m/z)
Interface Temp. 250 °C
Sample Size : 10 µg/mL in Dichloromethane
1 µL

Analyte :

1. 1,2,4-Trichlorobenzene
 2. Naphthalene
 3. Benzotrichloride
 4. 2-Methylnaphthalene
 5. 1-Methylnaphthalene
 6. Biphenyl
- I.S. Naphthalene-d8