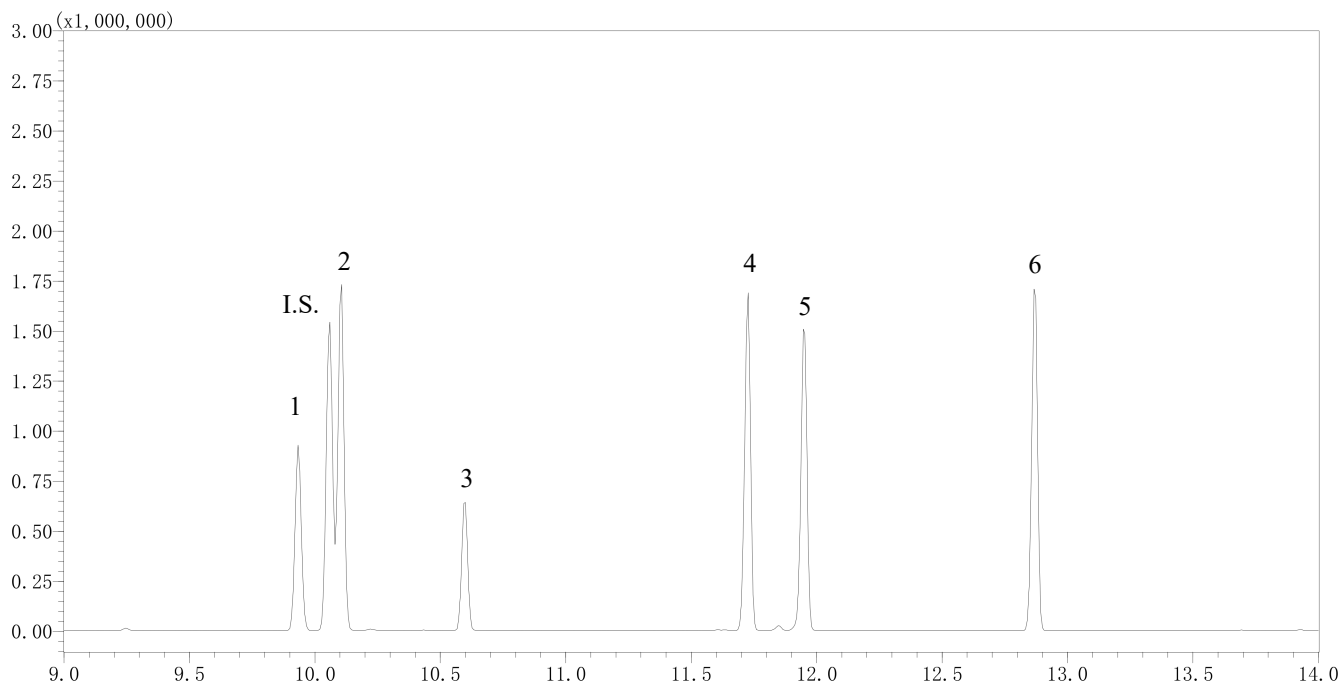


# InertSearch™ for GC

InertCap® Applications

## Aromatic compounds

Data No. GA 186-0644



### Conditions

**System** : GC/MS  
**Column** : InertCap 5MS/Sil  
0.25 mm I.D. x 30 m df = 0.25 µm  
**Col. Cat. No.** : 1010-15142  
**Col. Temp.** : 40 °C(1 min hold) - 10 °C/min - 250 °C  
**Carrier Gas** : He 36.5 cm/sec  
**Injection** : Splitless 1min  
250 °C  
**Detection** : MS Scan (35 – 400 m/z)  
Interface Temp. 250 °C  
**Sample Size** : 10 µg/mL in Dichloromethane  
1 µL

### Analyte :

1. 1,2,4-Trichlorobenzene  
2. Naphthalene  
3. Benzotrichloride  
4. 2-Methylnaphthalene  
5. 1-Methylnaphthalene  
6. Biphenyl  
I.S. Naphthalene-d8