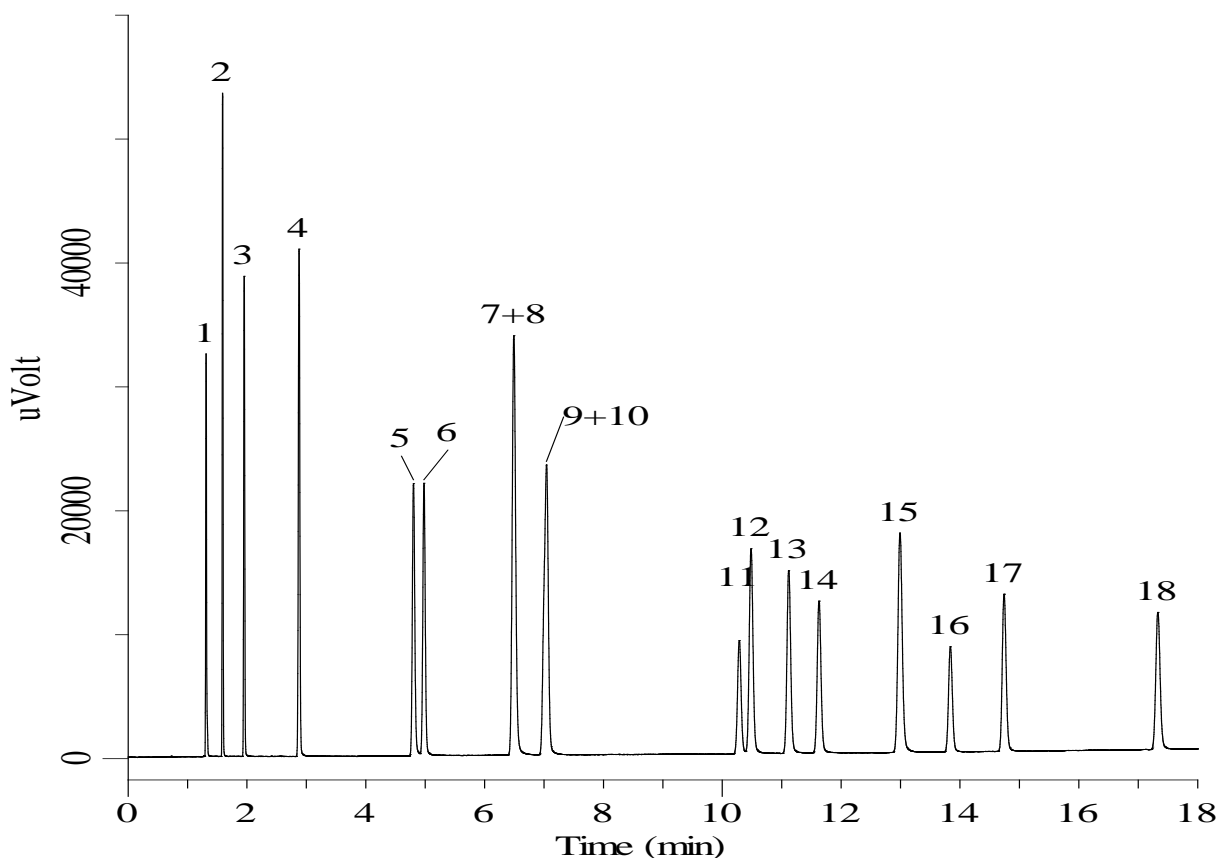


# InertSearch™ for GC

InertCap® Applications

## Hydrocarbons C1-C5

Data No. GA198-0410



### Conditions

**System** : GC/FID  
**Column** : TC-BOND Alumina/KCl  
0.53 mm I.D. x 30 m df = 10 µm  
**Col. Cat. No.** : 1010-40143  
**Col. Temp.** : 40 °C - 5 °C/min - 200 °C  
**Carrier Gas** : He 30 kPa  
**Injection** : Split flow 50 mL/min  
200 °C  
**Detection** : FID Range 10<sup>0</sup>  
200 °C  
**Sample Size** : 100 ppm Vol/Vol in He  
200 µL

### Analyte

1. Methane	10. <i>n</i> -Butane
2. Ethane	11. <i>trans</i> -2-Butene
3. Ethylene	12. 1-Butene
4. Propane	13. Isobutene
5. Cyclopropane	14. <i>cis</i> -2-Butene
6. Propylene	15. Isopentane
7. Acetylene	16. Methylacetylene
8. Isobutane	17. 1,3-Butadiene
9. Propadiene	18. 2-Methyl-1-butene