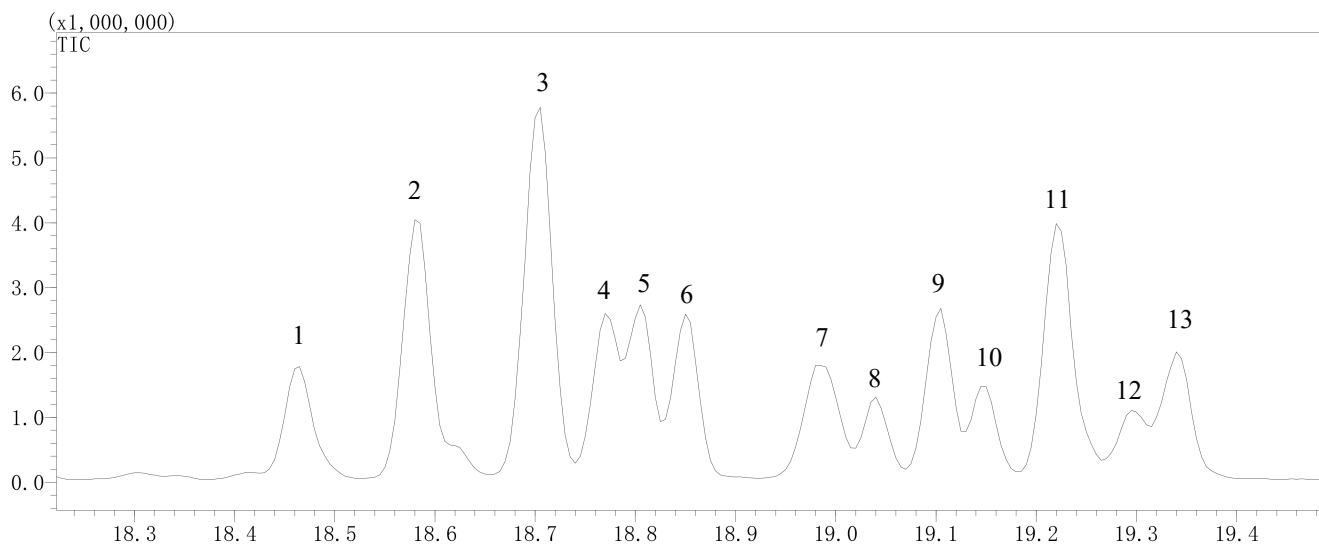


InertSearch™ for GC

InertCap® Applications

4-Nonylphenol

Data No. GA 216-0644



Conditions

- System** : GC-MS
Column : InertCap 5MS/NP
0.25 mm I.D. x 30 m df = 0.25 µm
Col. Cat. No. : 1010-18642
Col. Temp. : 50 °C(1 min hold) - 8 °C/min - 280 °C
Carrier Gas : He 36.3 cm/sec
Injection : Splitless 1min
250 °C
Detection : MS Scan ($m/z = 35 - 500$)
Interface Temp. 280 °C
Sample Size : 100 µg/mL (Isomer Mixture) in Dichloromethane
1 µL
Analyte : 1. 4-(2,4-dimethylheptan-4-yl)phenol
2. 4-(2,4-dimethylheptan-2-yl)phenol
3. 4-(3,6-dimethylheptan-3-yl)phenol
4. 4-(3,5-dimethylheptan-3-yl)phenol
5. 4-(2,5-dimethylheptan-2-yl)phenol
6. 4-(3,5-dimethylheptan-3-yl)phenol
7. 4-(3-ethyl-2-methylhexane-2-yl)phenol
8. 4-(3,4-dimethylheptan-4-yl)phenol
9. 4-(3,4-dimethylheptan-3-yl)phenol
10. 4-(3,4-dimethylheptan-4-yl)phenol
11. 4-(2,3-dimethylheptan-2-yl)phenol
12. 4-(3-methyloctan-3-yl)phenol
13. 4-(3,4-dimethylheptan-3-yl)phenol