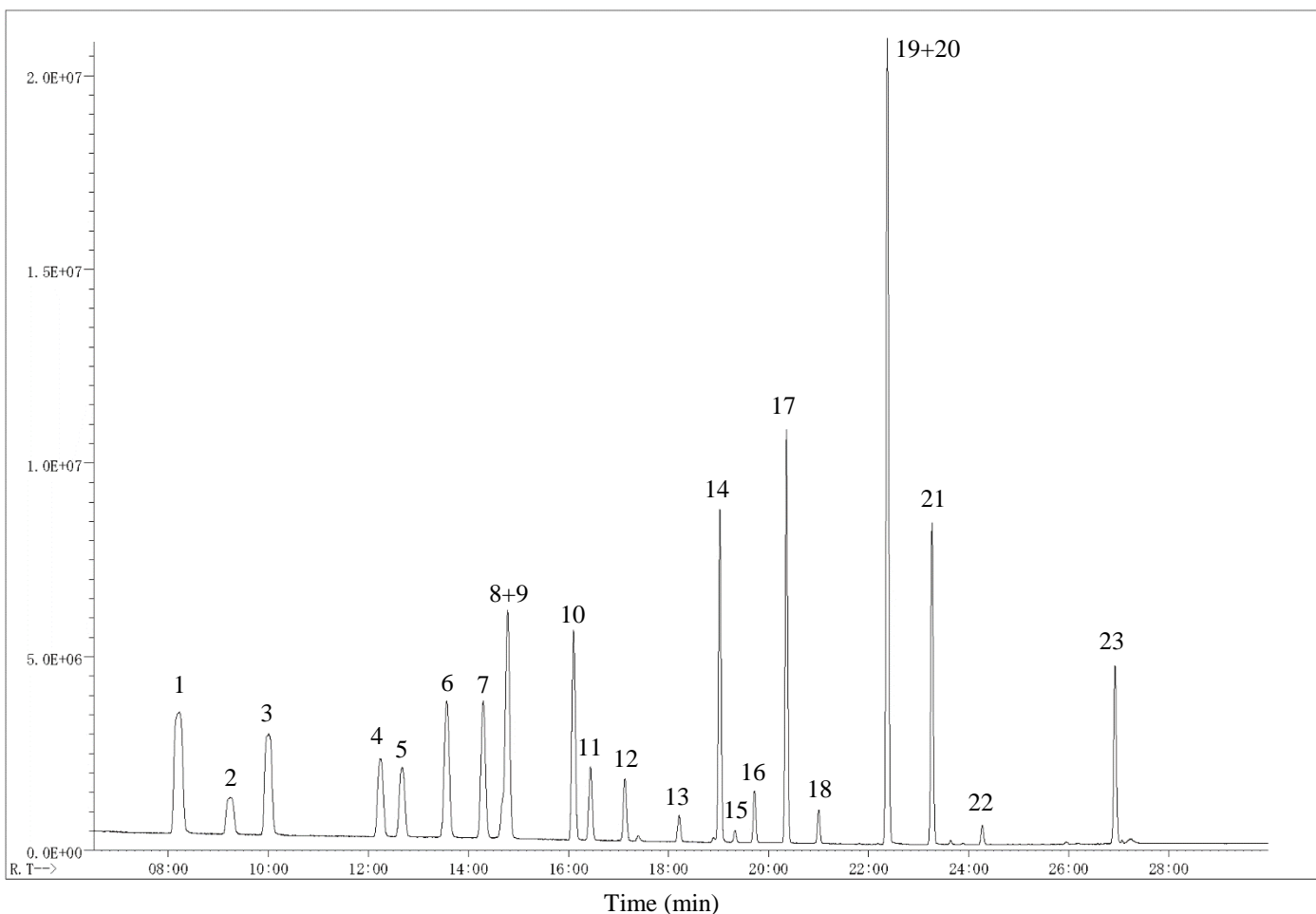


InertSearch™ for GC

InertCap® Applications

Volatile organic compounds

Data No. GA239-0591



InertSearch™ for GC

InertCap® Applications

Volatile organic compounds

Data No. GA239-0591

Conditions

System	: HS-GC-MS
Column	: InertCap AQUATIC 0.25 mm I.D. x 60 m df = 1.0 µm
Col. Cat. No.	: 1010-29165
Col. Temp.	: 40 °C (5 min hold) - 5 °C/min - 80 °C - 10 °C/min - 200 °C (5 min hold)
Carrier Gas	: He 120 kPa
Injection	: Split flow 3 mL/min 160°C
Detection	: MS Scan ($m/z = 45 - 250$) Interface Temp. 200 °C
Sample Size	: Headspace Gas 1 mL Sample heating Temp. 60 °C Sample heating time 15 min 10 ng/mL in Water 10 mL in Vial (22 mL)

Analyte

- | | |
|---------------------------------------|---------------------------------------|
| 1. 1,1-Dichloroethylene | 13. <i>cis</i> -1,3-dichloropropene |
| 2. Dichloromethane | 14. Toluene |
| 3. <i>trans</i> -1,2-dichloroethylene | 15. <i>trans</i> -1,3-dichloropropene |
| 4. <i>cis</i> -1,2-dichloroethylene | 16. 1,1,2-Trichloroethane |
| 5. Chloroform | 17. Tetrachloroethylene |
| 6. 1,1,1-Trichloroethane | 18. Dibromochloromethane |
| 7. Carbon tetrachloride | 19. <i>m</i> -Xylene |
| 8. 1,2-Dichloroethane | 20. <i>p</i> -Xylene |
| 9. Benzene | 21. <i>o</i> -Xylene |
| 10. Trichloroethylene | 22. Bromoform |
| 11. 1,2-Dichloropropane | 23. 1,4-Dichlorobenzene |
| 12. Bromodichloromethane | |