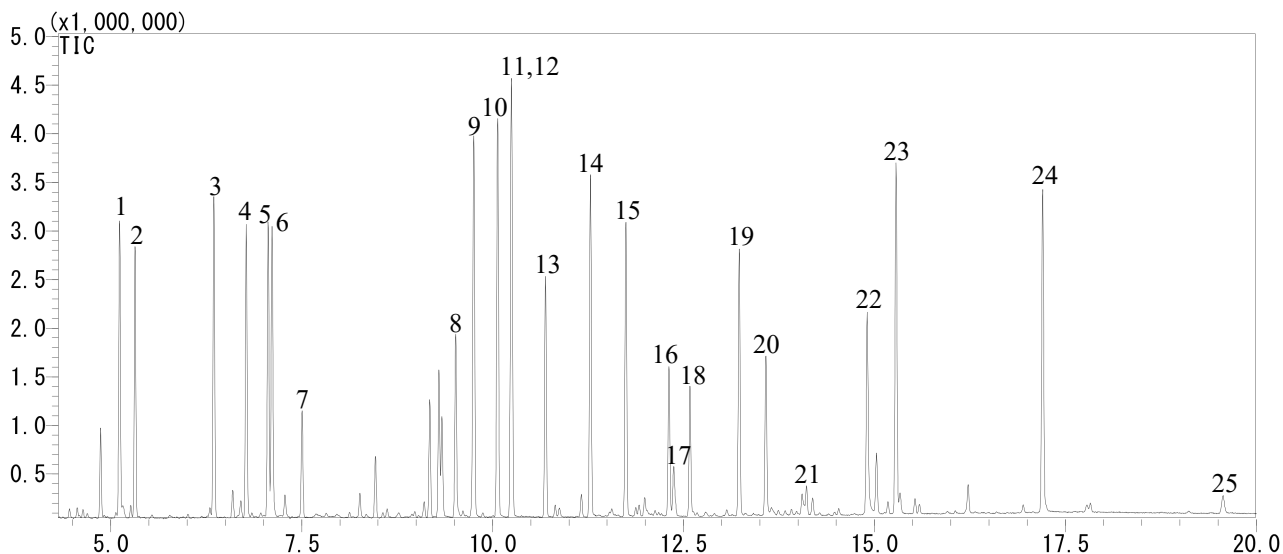


InertSearch™ for GC

InertCap® Applications

Analysis of Amino Acids as *tert.*-Buthyldimethylsilyl Derivatives

Data No. GA249-0874



Conditions

System : GC-MS
Column : InertCap 5MS/NP
0.25 mm I.D. x 30 m df = 0.25 µm
Col. Cat. No. : 1010-18642
Col. Temp. : 150 °C(2 min) - 10 °C/min - 300 °C(3 min)
Carrier Gas : He 40 cm/s
Injection : Split 1:20
280 °C
Detection : MS Scan ($m/z = 45 - 800$)
Interface Temp. 280 °C
Sample Size : 50 mg/L
1.0 µL

InertSearch™ for GC

InertCap® Applications

Analyte :

1. Alanine
2. Glycine
3. Valine
4. Leucine
5. *allo*-Isoleucine
6. Isoleucine
7. Proline
8. Methionine
9. Serine
10. Threonine
11. *allo*-Threonine
12. Hydroxyproline (converted from Proline)
13. Phenylalanine
14. Asparagine acid
15. Cysteine
16. Glutamine acid
17. Ornithine (converted from Arginine)
18. Asparagine
19. Lysine
20. Glutamine
21. Arginine
22. Histidine
23. Tyrosine
24. Typtophane
25. Cystine (converted from Cystein)

(Deriv. by MTBSTFA)

Referance

Christopher J. Biermann et al., *J. Chromatography.*, 357, 330-334(1986)

Thomas P. Mawhinney et al., *J. Chromatography.*, 358, 231-242(1986)

S. L. MacKenzie et al., *J. Chromatography.*, 387, 241-253(1987)

H. J. Chaves Das Neves et al., *J. Chromatography.*, 392, 249-258(1987)