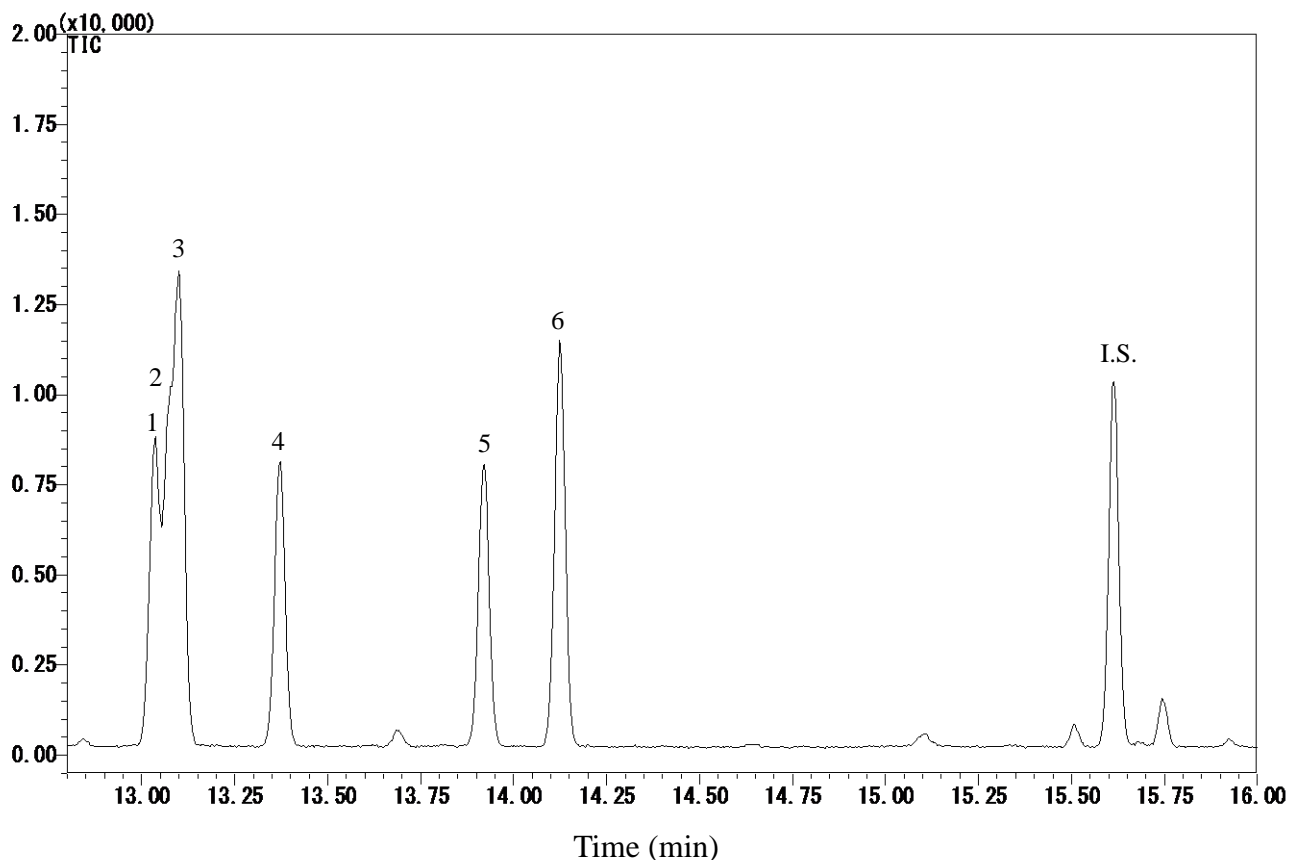


# InertSearch™ for GC

InertCap® Applications

## 2,4-Dichlorophenol

Data No. GA 253-0644



### Conditions

**System** : GC-MS  
**Column** : InertCap 5MS/NP  
0.25 mm I.D. x 30 m df = 0.25  $\mu$ m  
**Col. Cat. No.** : 1010-18642  
**Col. Temp.** : 40 °C (1 min hold) - 10 °C/min - 120 °C  
- 5 °C/min - 150 °C - 20 °C/min  
- 280 °C (5 min hold)  
**Carrier Gas** : He 36.1 cm/s  
**Injection** : Splitless 1min  
250 °C  
**Detection** : MS SIM  
Interface Temp. 280 °C  
**Sample Size** : Analyte in Dichloromethane  
1  $\mu$ L

**Analyte** :

1. 2,5-Dichlorophenol (0.1  $\mu$ g/mL)
2. 2,6-Dichlorophenol (0.1  $\mu$ g/mL)
3. 3,5-Dichlorophenol (0.1  $\mu$ g/mL)
4. 2,4-Dichlorophenol (0.1  $\mu$ g/mL)
5. 2,3-Dichlorophenol (0.1  $\mu$ g/mL)
6. 3,4-Dichlorophenol (0.1  $\mu$ g/mL)

I.S. Acenaphthene-*d*10 (0.1  $\mu$ g/mL)  
(TMS Deriv. by BSTFA)

# InertSearch™ for GC

InertCap® Applications

## 2,4-Dichlorophenol

Data No. GA 253-0644

