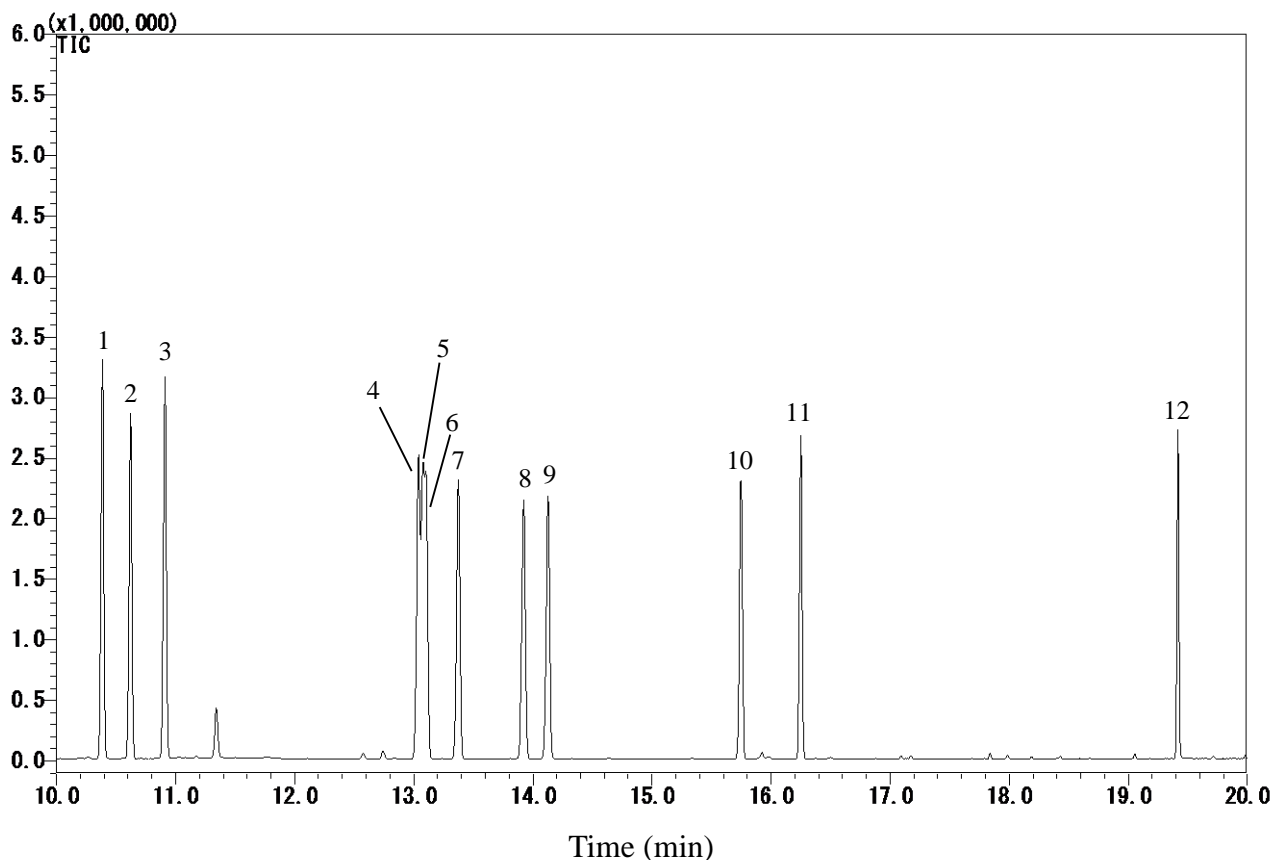


InertSearch™ for GC

InertCap® Applications

Chlorophenols

Data No. GA 257-0644



Conditions

System : GC-MS

Column : InertCap 5MS/NP
0.25 mm I.D. x 30 m df = 0.25 µm

Col. Cat. No. : 1010-18642

Col. Temp. : 40 °C (1 min hold) - 10 °C/min - 120 °C
- 5 °C/min - 150 °C - 20 °C/min
- 280 °C (5 min hold)

Carrier Gas : He 36.1 cm/s

Injection : Splitless 1min
250 °C

Detection : MS Scan (*m/z* 35 - 450)
Interface Temp. 280 °C

Sample Size : 10 µg/mL in Acetone
1 µL

Analyte :

1. 2-Chlorophenol

2. 3-Chlorophenol

3. 4-Chlorophenol

4. 2,5-Dichlorophenol

5. 2,6-Dichlorophenol

6. 3,5-Dichlorophenol

7. 2,4-Dichlorophenol

8. 2,3-Dichlorophenol

9. 3,4-Dichlorophenol

10. 2,4,6-Trichlorophenol

11. 2,3,6-Trichlorophenol

12. Pentachlorophenol
(TMS Deriv. by BSTFA)