

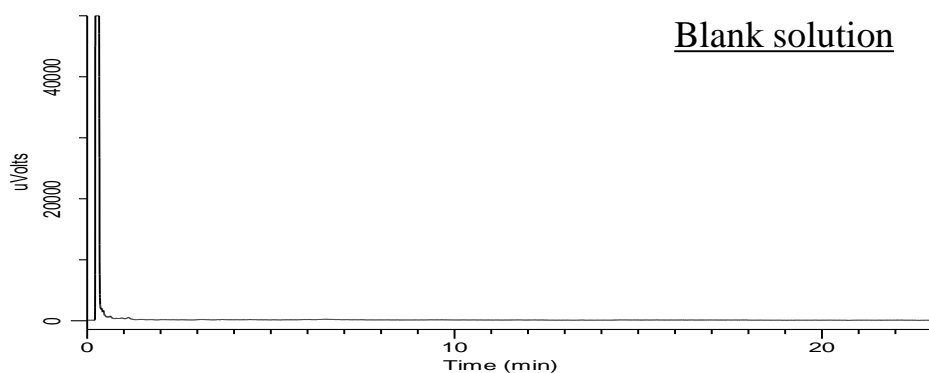
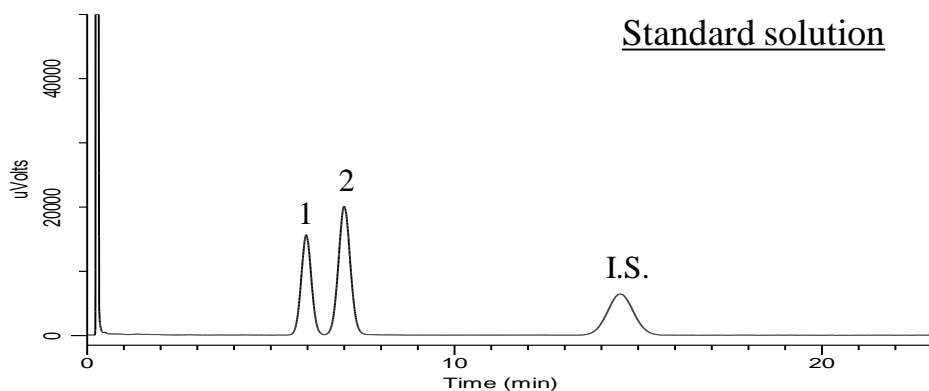
InertSearch™ for GC

InertCap® Applications

Analysis of Saccharin

(Under the Condition of the PDG (Pharmacopeial Discussion Group) Stage 6 Drafts)

Data No. GA 273-0904



Conditions

System : GC-FID
Column : InertCap 17 (Tailor-made column)
0.53 mm I.D. x 10 m df = 2.0 µm
Col. Temp. : 180 °C
Carrier Gas : N₂ 10 mL/min Constant Flow
Injection : Split 1:2
250 °C
Injection Vol. : 1 µL
Detection : FID Auto Range
250 °C
Sample : Standard in Dichloromethane

Analyte

1. *o*-Toluenesulfonamide
2. *p*-Toluenesulfonamide
I.S. Caffeine

Resolution (1, 2) : 1.86 (≥ 1.5)