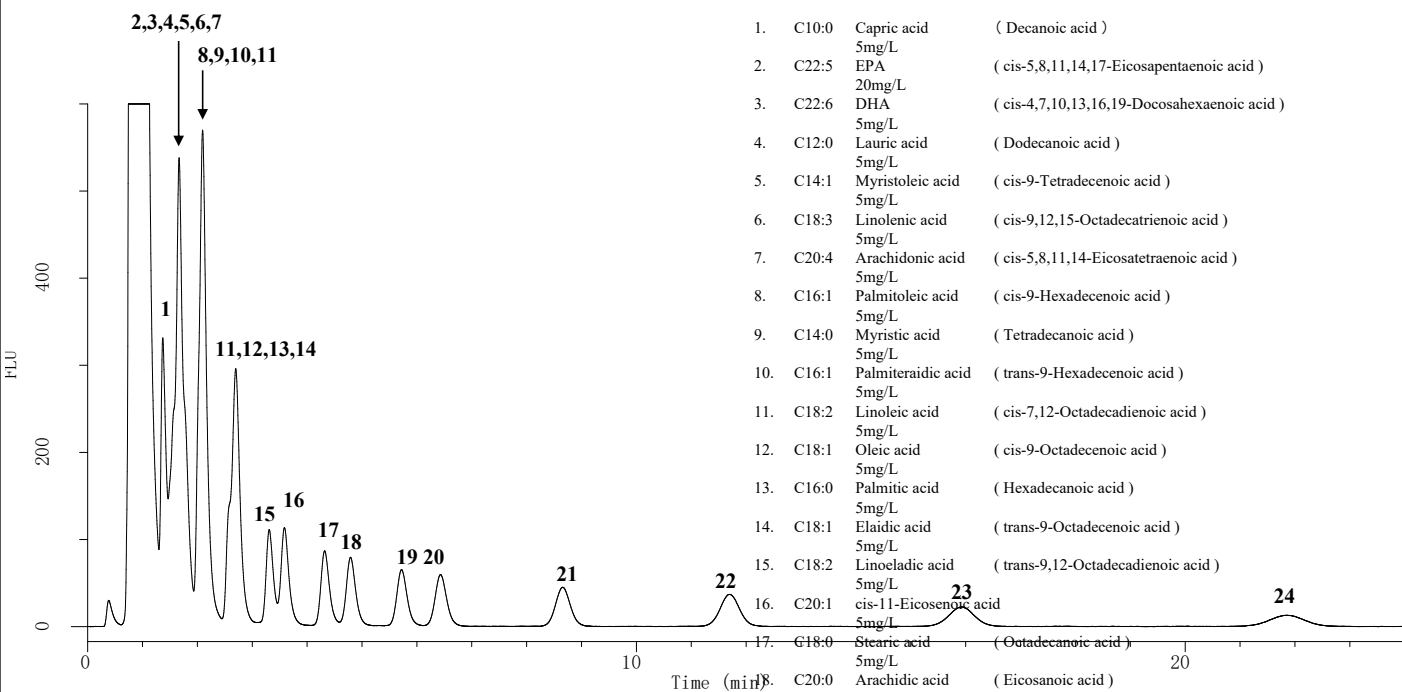


InertSearch™ for LC

Inertsil® Applications

Analysis of aliphatic acid (prelabel derivatization by ADAM reagent)

Data No. LA588-0696



1.	C10:0	Capric acid	(Decanoic acid)
2.	C22:5	EPA	(cis-5,8,11,14,17-Eicosapentaenoic acid)
3.	C22:6	DHA	(cis-4,7,10,13,16,19-Docosahexaenoic acid)
4.	C12:0	Lauric acid	(Dodecanoic acid)
5.	C14:1	Myristoleic acid	(cis-9-Tetradecenoic acid)
6.	C18:3	Linolenic acid	(cis-9,12,15-Octadecatrienoic acid)
7.	C20:4	Arachidonic acid	(cis-5,8,11,14-Eicosatetraenoic acid)
8.	C16:1	Palmitoleic acid	(cis-9-Hexadecenoic acid)
9.	C14:0	Myristic acid	(Tetradecanoic acid)
10.	C16:1	Palmiteradic acid	(trans-9-Hexadecenoic acid)
11.	C18:2	Linoleic acid	(cis-7,12-Octadecadienoic acid)
12.	C18:1	Oleic acid	(cis-9-Octadecenoic acid)
13.	C16:0	Palmitic acid	(Hexadecanoic acid)
14.	C18:1	Elaidic acid	(trans-9-Octadecenoic acid)
15.	C18:2	Linoleic acid	(trans-9,12-Octadecadienoic acid)
16.	C20:1	cis-11-Eicosenoic acid	
17.	C18:0	Stearic acid	(Octadecanoic acid)
18.	C20:0	Arachidic acid	(Eicosanoic acid)
19.	C24:1	Nervonic acid	(cis-15-Tetracosenoic acid)
20.	C22:0	Behenic acid	(Docosanoic acid)
21.	C24:0	Lignoceric acid	(Tetracosanoic acid)
22.	C26:0	Cerotic acid	(Hexacosanoic acid)
23.	C28:0	Montanic acid	(Octacosanoic acid)
24.	C30:0	Melissic acid	(Triacosanoic acid)

Conditions

System	: GL-7400 HPLC system
Column	: Inertsil ODS-P (5 µm, 250 x 3.0 mm I.D)
Column Cat. No.	:
Eluent	: CH ₃ CN
Flow Rate	: 1.5 mL/min
Col. Temp.	: 60 °C
Detection	: FL Ex 365 nm Em 412 nm (GL-7453A FL detector)
Injection Vol.	: 5 µL
Analyte	: aliphatic acid derivitized with ADAM reagent