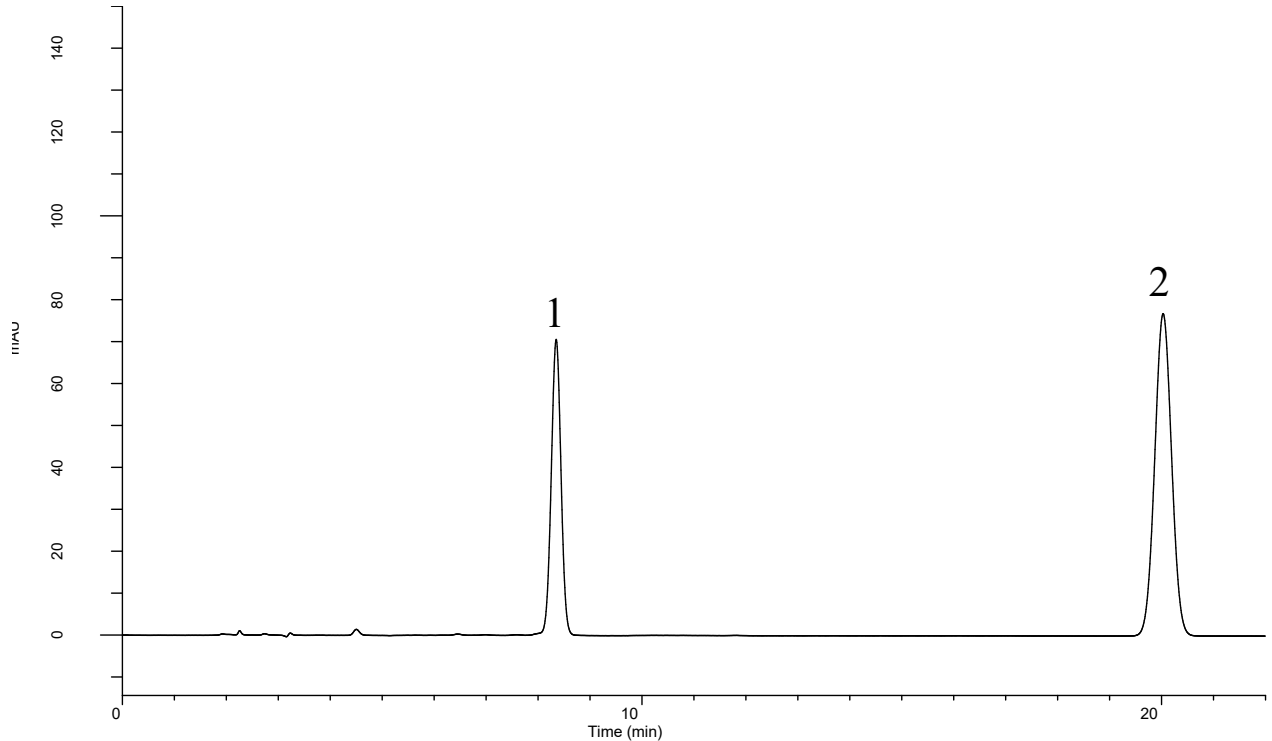


# InertSearch™ for LC

Inertsil® Applications

## Analysis of Clindamycin Phosphate (Under the Condition of Japanese Pharmacopoeia)

Data No. LA 662-811



### Conditions

**System** : GL-7400 HPLC system  
**Column** : Inertsil C8-3 (5 $\mu$ m, 250 x 4.0 mm I.D.)  
**Column Cat. No.** : 5020-01903  
**Eluent** : A) CH<sub>3</sub>CN  
          B) 100 mM KH<sub>2</sub>PO<sub>4</sub> (pH 2.5, H<sub>3</sub>PO<sub>4</sub>)  
          A/B = 225/775, v/v (Premix)  
**Flow rate** : 0.9 mL/min  
**Col. Temp.** : 25 °C  
**Detection** : UV 210 nm (GL-7450 UV Detector)  
**Injection Vol.** : 20  $\mu$ L  
**Sample** : 1. Clindamycin Phosphate  
          2. Methyl *p*-hydroxybenzoate

### Analyte:

1. Clindamycin Phosphate (200 mg/L)  
2. Methyl *p*-hydroxybenzoate (15 mg/L)

$R_s = 24.8 > 4$  (JP 15)