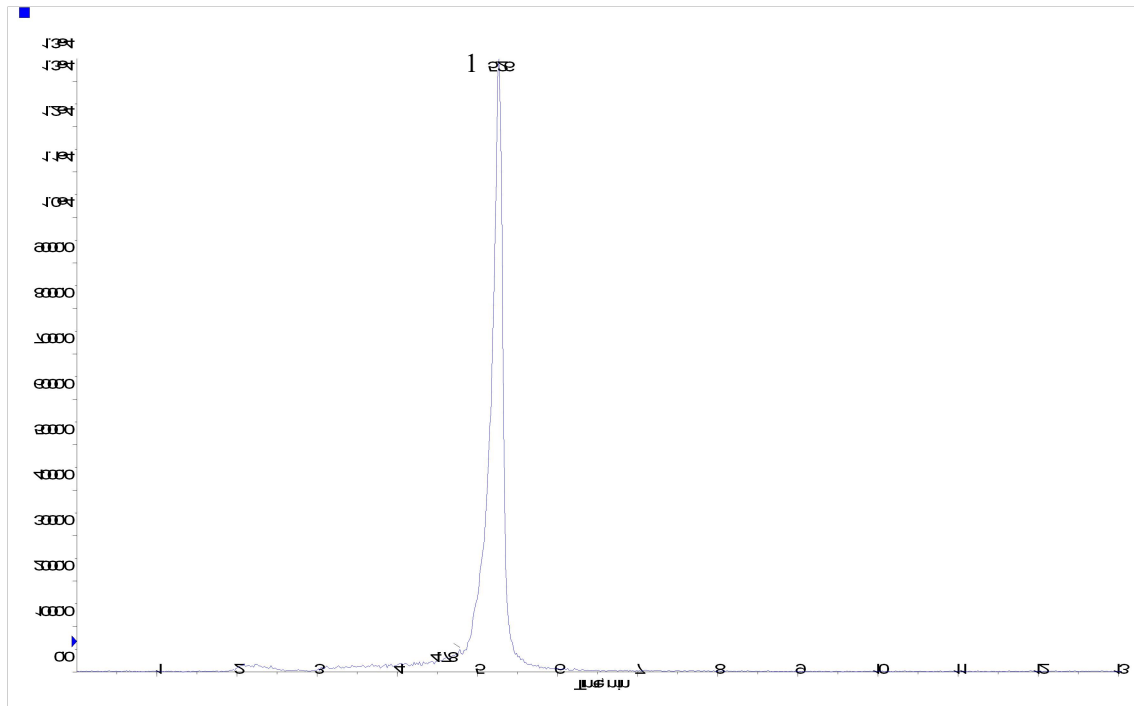


# InertSearch™ for LC

Inertsil® Applications

## Analysis of Oxine copper

Data No. LA686-0811



### Conditions

**System** : LC800 HPLC system  
4000 Q TRAP®

**Column** : Inertsil ODS-4 (3 µm, 150 x 2.1 mm I.D.)

**Column Cat. No.** : 5020-04015

**Eluent** : A) CH<sub>3</sub>CN  
B) 0.25 % HCOOH in H<sub>2</sub>O  
A/B = 5/95 – 5 min – 30/70, v/v

**Flow Rate** : 0.2 mL/min

**Col. Temp.** : 40 °C

**Detection** : LC/MS/MS (ESI, Positive, MRM)

**Injection Vol.** : 10 µL

### Analyte

1. Oxine copper (0.1 mg/L)  
Q1: 145.7 Q3: 74.8