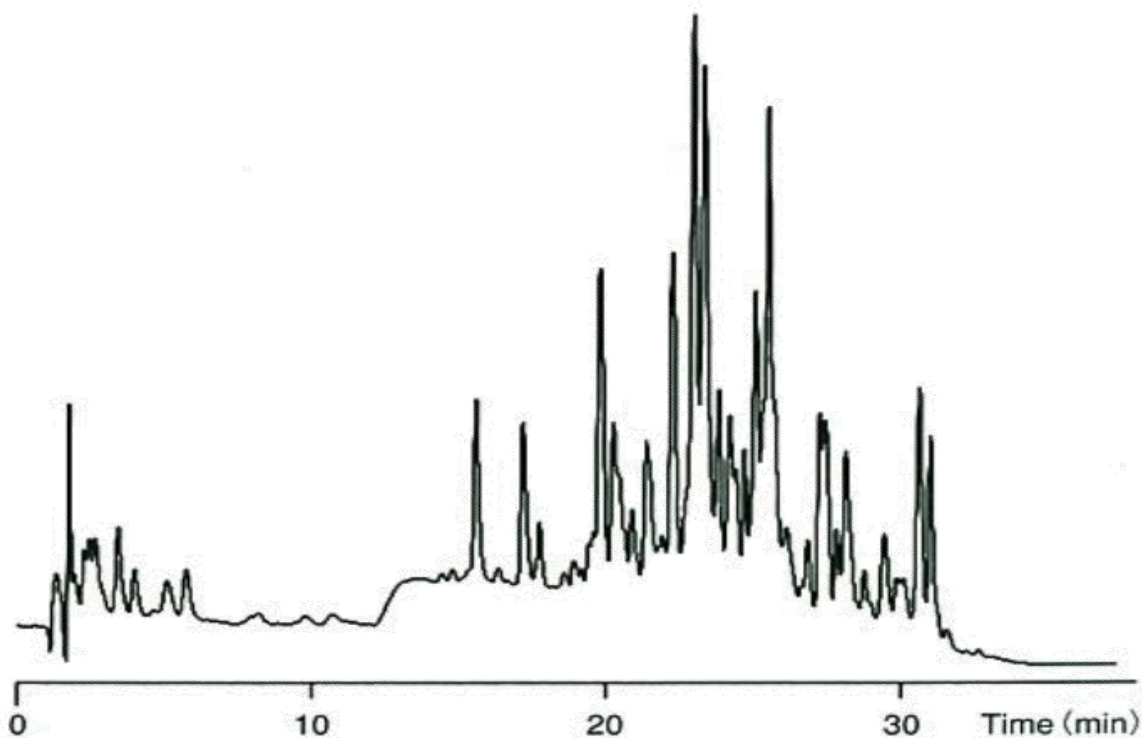


InertSearch™ for LC

Inertsil® Applications

Analysis of Peptides

Data No. LA689-0000



Conditions

Column : Inertsil Peptides C18 (4 μ m, 150 x 2.1 mm I.D.)
Column Cat. No. : 5020-08025
Eluent : A) 0.1 % TFA in (CH₃CN/H₂O = 90/10, v/v)
 : B) 0.1 % H₂O
 : A/B = 10/90 – 10 min – 10/90 – 40 min – 60/40, v/v
Flow Rate : 0.3 mL/min
Col. Temp. : 30 °C
Detection : UV 210 nm
Injection Vol. : 2 μ L
Sample : Tryptic Digest of Cytochrom C