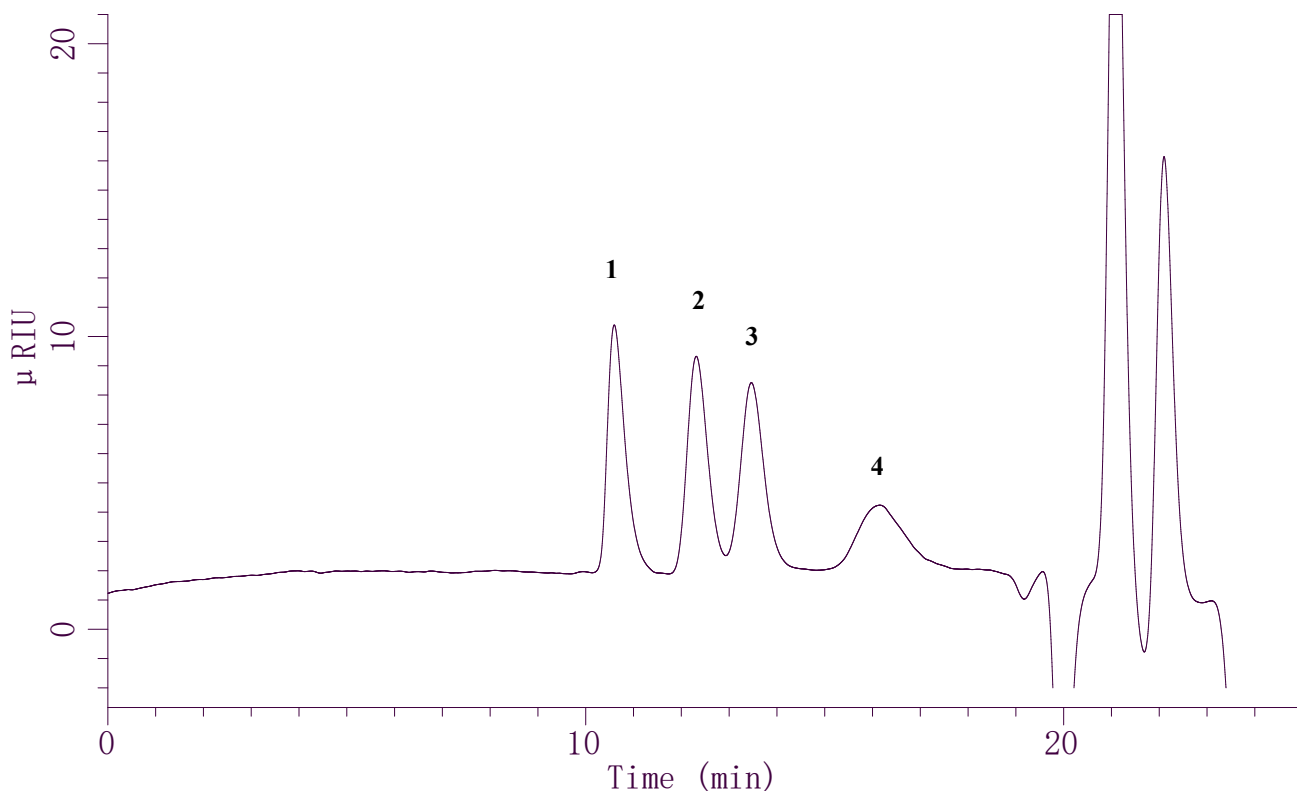


InertSearch™ for LC

Inertsil® Applications

Analysis of Polystyrene

Data No. LA701-0696



Conditions

System : GL7400 HPLC system
Column : 1. Inertsil WP300 Diol (5μm, 250 x 4.6 mmI.D.)
+ 2. Inertsil Diol (5μm, 250 x 4.6 mmI.D.)
Column Cat. No. : 1. 5020-05946
2. 5020-05646
Eluent : THF
Flow Rate : 0.3 mL/min
Col. Temp. : 35°C
Detection : RI (GL-7454 RI Detector) (Cell Temp. 35°C)
Injection Vol. : 20μL

Analyte

Polystyrenes:
M.W.
1. 465,000
2. 48,000
3. 19,000
4. 2,200