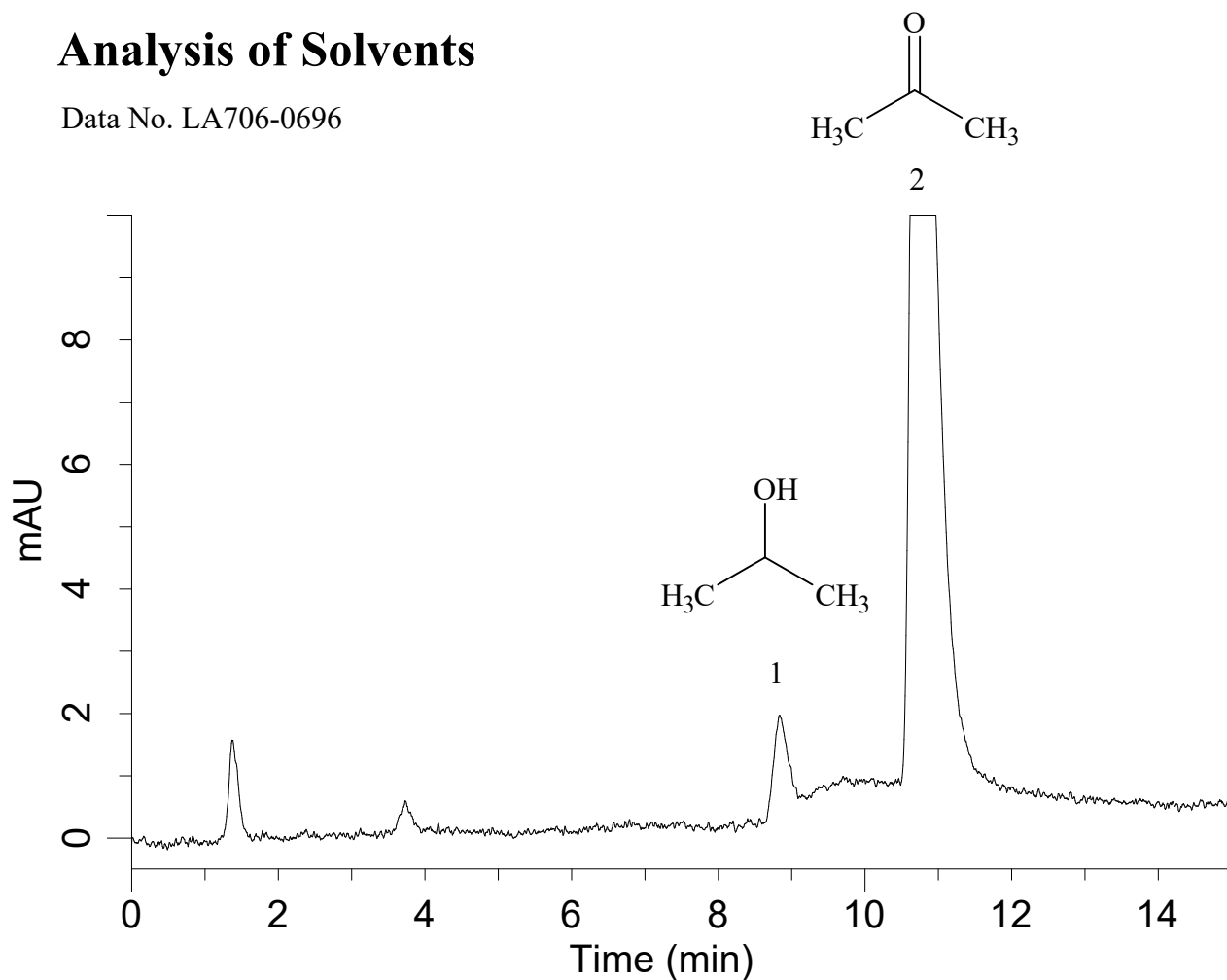


# InertSearch™ for LC

Inertsil® Applications

## Analysis of Solvents

Data No. LA706-0696



### Conditions

**System** : GL-7400 system  
**Column** : Inertsil ODS-SP (3 $\mu$ m, 50 x 3.0 mm I.D.)  
**Column Cat. No.** : 5020-02822  
**Eluent** : A) CH<sub>3</sub>CN  
          : B) H<sub>2</sub>O  
          : A/B = 2 / 98 ,v/v

**Flow rate** : 0.4 mL/min  
**Col. Temp.** : 20 °C  
**Detection** : UV 190 nm (GL-7452A PDA detector)  
**Injection Vol.** : 20  $\mu$ L

### Analyte

1. 2-Propanol (100 mg/L)  
2. Acetone (100 mg/L)