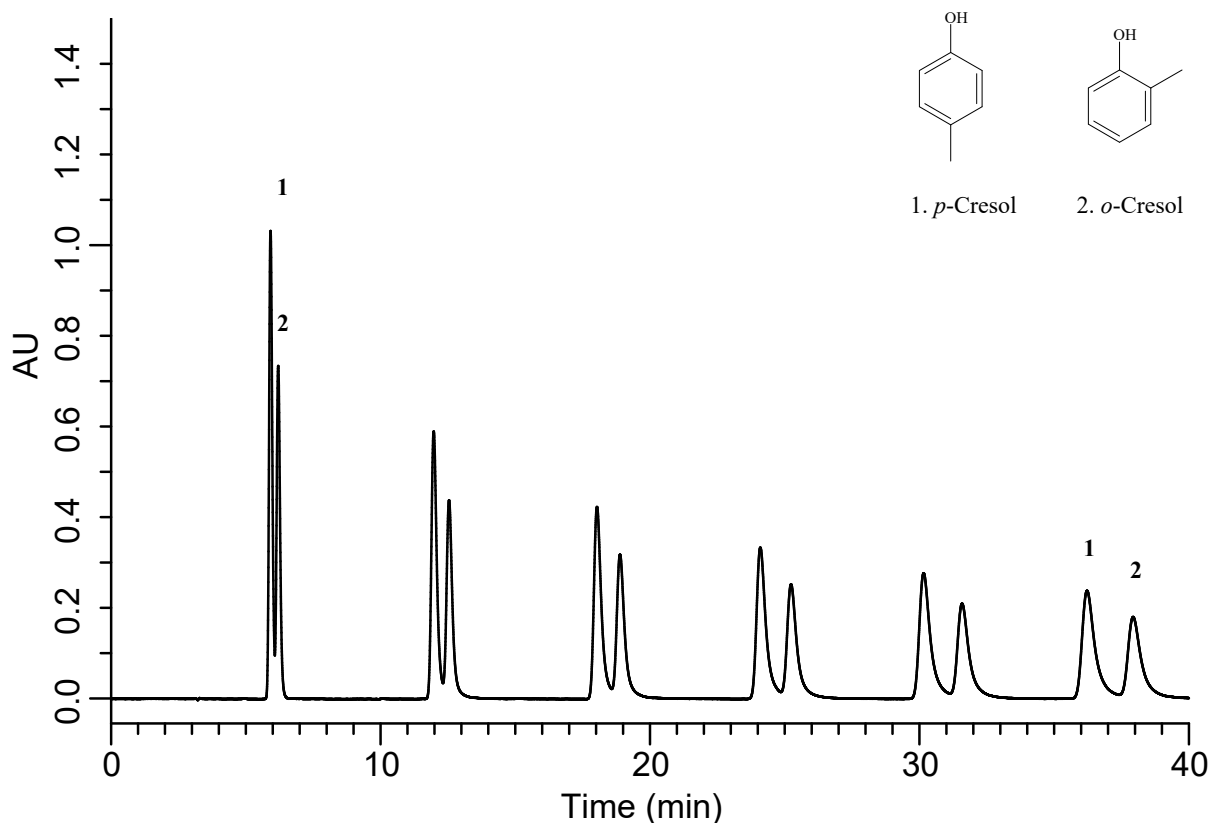


InertSearch™ for LC

Inertsil® Applications

Analysis of Geometrical isomers of Cresol

Data No. LA709-0659



Conditions

System : Recycle HPLC System
Column : Inertsil ODS-3 (5 µm, 250 x 4.6 mm I.D.)
Column Cat. No. : 5020-01732
Eluent : A) CH₃OH
B) H₂O
A/B = 70/30, v/v
Flow Rate : 0.8 mL/min
Col. Temp. : 35 °C
Detection : UV 280 nm (UV702 UV-VIS Detector)
Injection Vol. : 5 µL

Analyte

1. p-Cresol (0.05 % in H₂O, v/v)
2. o-Cresol (0.05 % in H₂O, v/v)