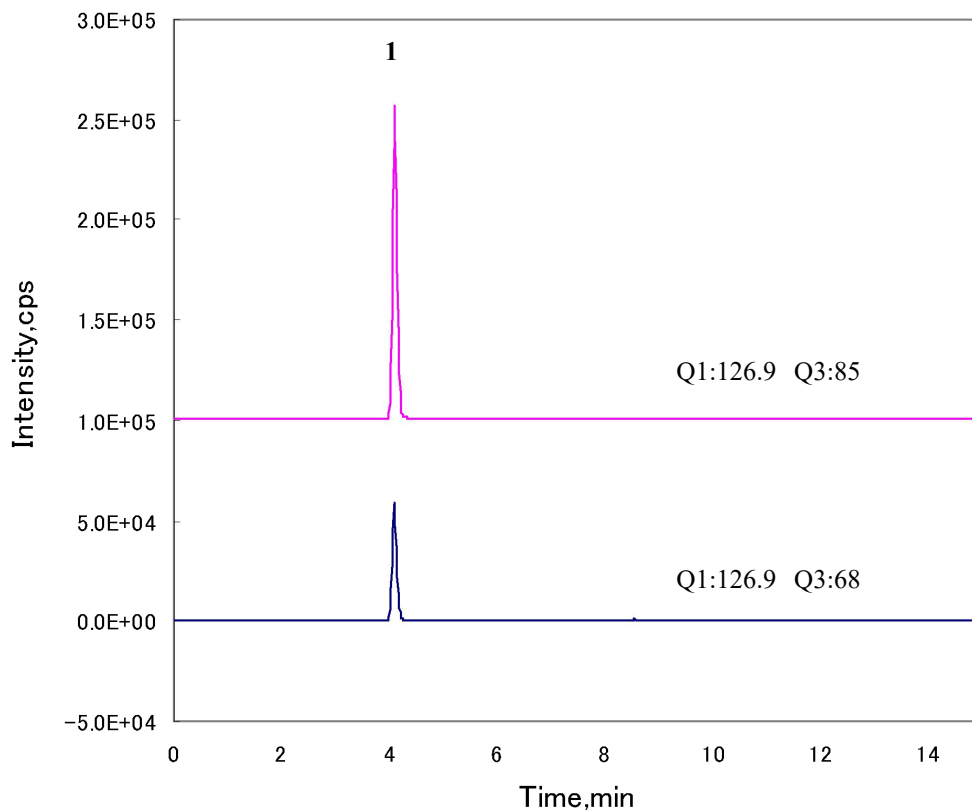


InertSearch™ for LC

Inertsil® Applications

Analysis of Melamine by LC/MS/MS

Data No. LA715-0696



Conditions

System : LC800

4000 Q TRAP®

Column : Inertsil HILIC (5µm, 150 x 3.0 mm I.D.)

Column Cat. No. : 5020-07715

Eluent : A) CH₃CN

B) 10mM Ammonium acetate

A / B = 85 / 15 – 0.5min – 85 / 15 – 6.5min – 50 / 50, v/v

Flow Rate : 0.5 mL/min

Col. Temp. : 40 °C

Detection : LC/MS/MS (4000Q TRAP™: ESI, Positive, MRM)

CUR CAD IS TEM GS1 GS2 ihe

10 8 5500 700 60 30 on

Injection Vol. : 5µL

Analyte

1. Melamine (10 µg/L)

Q1	Q3	DP	EP	CE	CXP
126.9	85	41	10	27	14
126.9	68	41	10	41	10