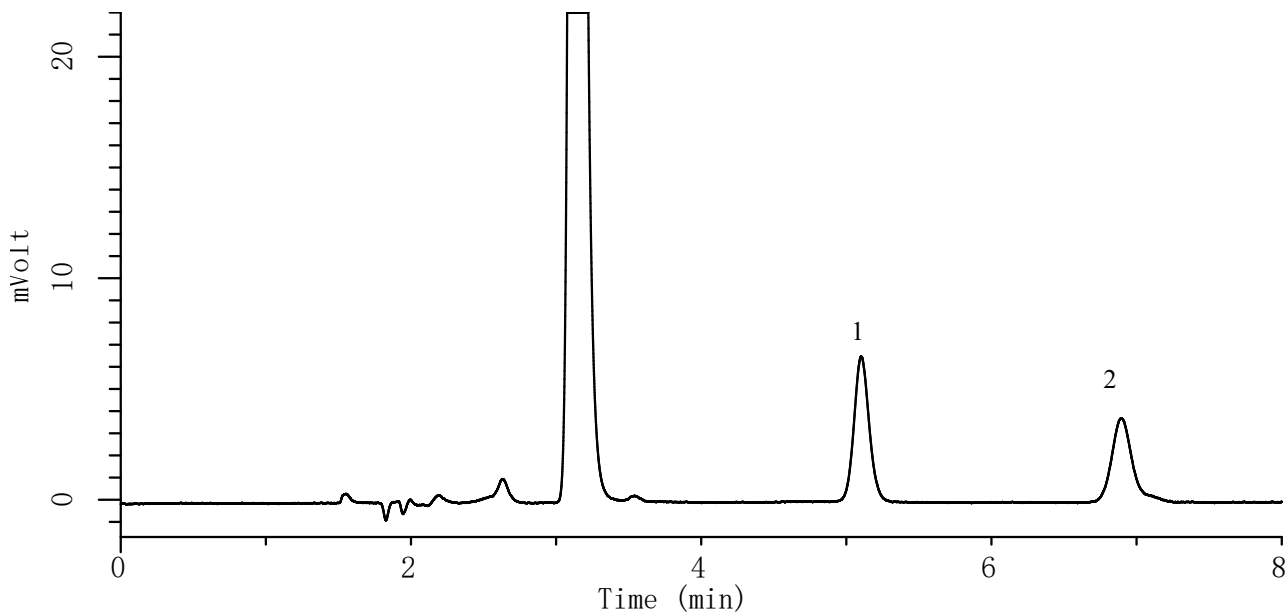


# InertSearch™ for LC

Inertsil® Applications

## Analysis of DNPH-aldehydes

Data No. LA719-0696



### Conditions

**Column** : Inertsil ODS-SP (5 $\mu$ m, 150 x 3.0 mm I.D.)

**Column Cat. No.** : 5020-02725

**Eluent** : A) CH<sub>3</sub>OH  
B) H<sub>2</sub>O  
A/B = 60/40, v/v

**Flow Rate** : 0.4 mL/min

**Col. Temp.** : 60 °C

**Detection** : UV 360 nm

**Injection Vol.** : 10  $\mu$ L

### Analyte

1. Formaldehyde-DNPH (100 $\mu$ g/L)
2. Acetaldehyde-DNPH (100 $\mu$ g/L)