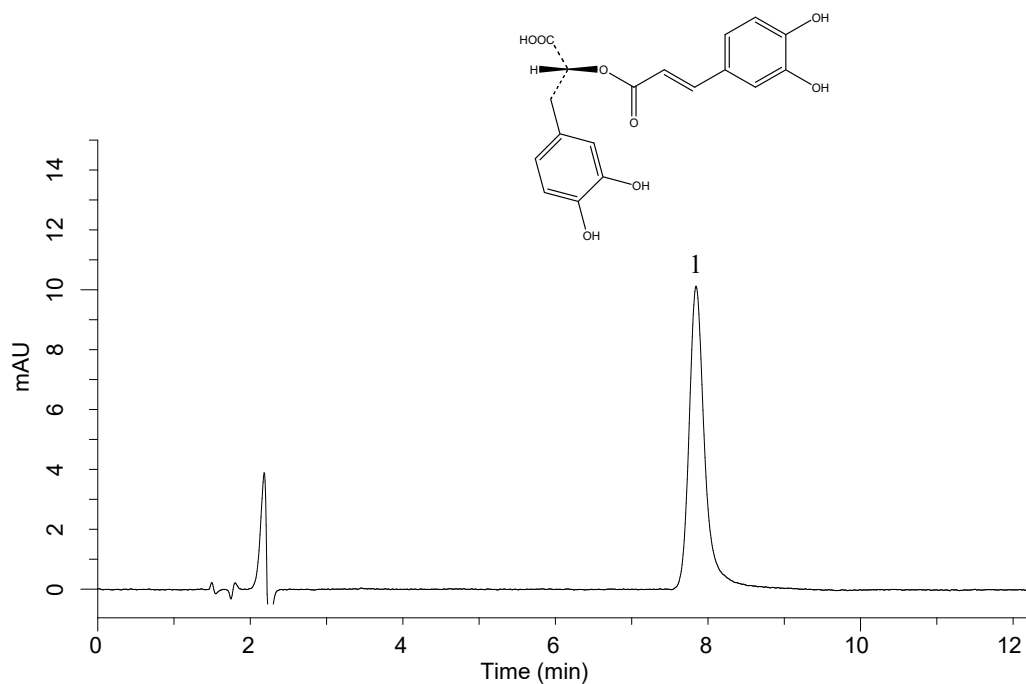


InertSearch™ for LC

Inertsil® Applications

Analysis of Rosmarinic acid

Data No. LA725-0811



Conditions

System : GL-7400HPLC system
Column : Inertsil ODS-4 (5 μ m, 150 x 3.0 mm I.D.)
Column Cat. No. : 5020-03925
Eluent : A) CH₃CN
B) 10mM KH₂PO₄ (pH 2.0, H₃PO₄)
A/B = 25 / 75
Flow Rate : 0.4 mL/min
Col. Temp. : 40 °C
Detection : UV 330 nm (GL-7452A PDA Detector)
Injection Vol. : 10 μ L

Analyte

1. Rosmarinic acid (5 mg/L)