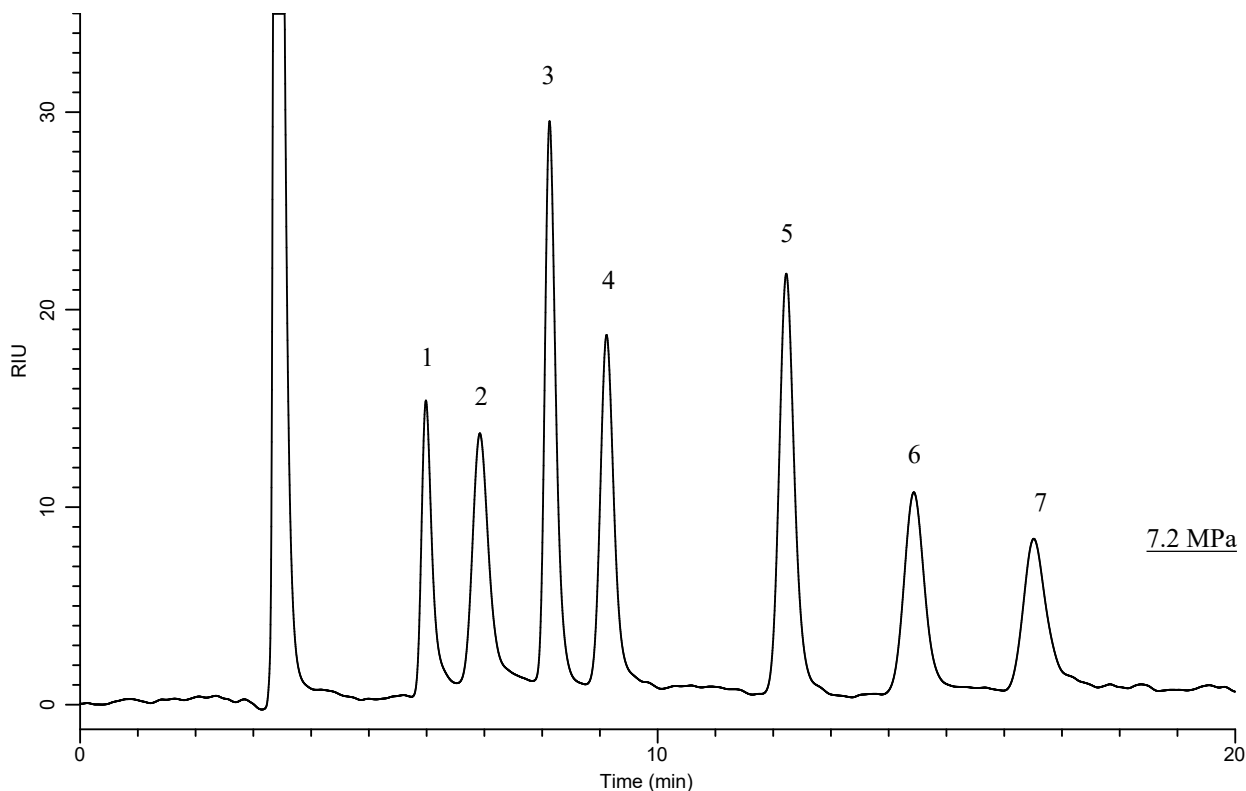


InertSearch™ for LC

Inertsil® Applications

Analysis of Sugars

Data No. LA728-0811



Conditions

System : GL-7400HPLC system
Column : Inertsil NH2 (3 μ m, 250 x 3.0 mm I.D.)
Column Cat. No. : 5020-05476
Eluent : A) CH₃CN
 : B) H₂O
 : A/B = 75/25, v/v
Flow Rate : 0.4 mL/min
Col. Temp. : 40 °C
Detection : RI (40°C, Positive) (GL-7454 RI detector)
Injection Vol. : 10 μ L

Analyte

1. Rhamnose	(2000 mg/L)
2. Fucose	(2000 mg/L)
3. Fructose	(2000 mg/L)
4. Glucose	(2000 mg/L)
5. Sucrose	(2000 mg/L)
6. Maltose	(2000 mg/L)
7. Lactose	(2000 mg/L)