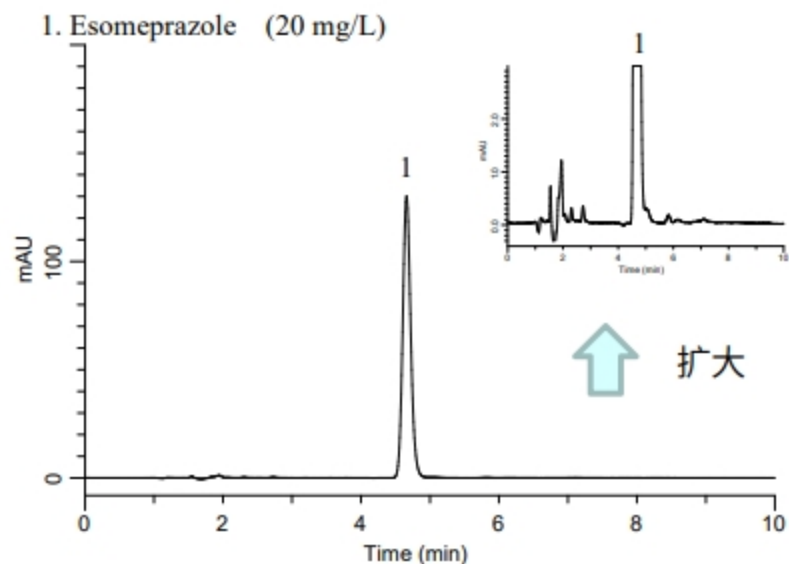


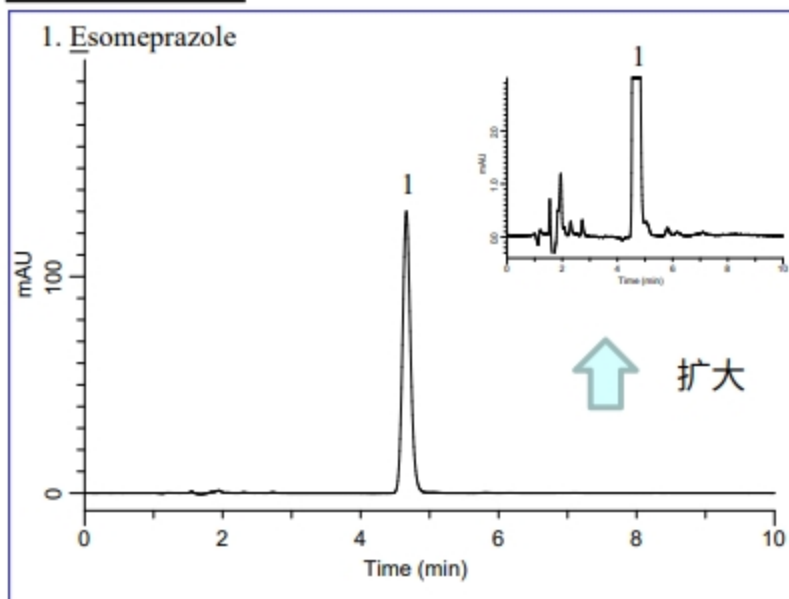
埃索美拉唑镁是一种质子泵抑制剂(PPI; Proton pump inhibitor)的药物, 作为胃溃疡, 十二指肠溃疡和幽门螺杆菌的除菌辅助药进行治疗。

此次, 根据美国药典(USP)中的分析条件, 我们用 InertSustain C18进行定量法的分析。

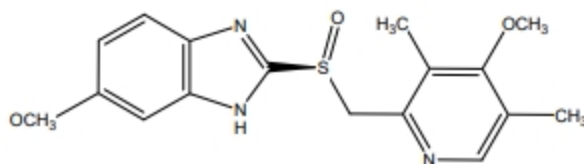
## 标准液测定例



## 胶囊测定例



## 结构式



Structures are created using Chemistry 4-D Draw which is provided by ChemInnovation Software, Inc.

## HPLC条件(USP)

分析色谱柱 : InertSustain C18  
(5  $\mu$ m, 150 x 4.6 mm I.D.)

色谱柱Cat. No. : 5020-07345

流动相 : Buffer\*

流速 : 1.0 mL/min

色谱柱温度 : 25  $^{\circ}$ C

检测器 : UV 302 nm

注入量 : 20  $\mu$ L

\* Buffer: a pH 7.3 phosphate buffer was prepared by mixing 10.5 mL of 1.0 M monobasic sodium phosphate buffer with 60 mL of 0.5M dibasic sodium phosphate buffer and then diluted with 1000 mL of water. 350mL of acetonitrile for HPLC is added to 500 mL of the solution above and then diluted with water to 1000 mL.

## 胶囊前处理例

### 样品

- 从20个胶囊中取出内容物并混合
- 称取相当20 mg的量, 并放入100 mL容量的烧杯

### 萃取

- 添加60mL稀释液\*\*
- 振动20 min、超声2 min(直到溶解)
- 甲醇20 mL、超声2 min
- 冷却

### 定容

- 用稀释液\*\*定容至100 mL
- 1  $\mu$ m滤器

### HPLC

\*\* 稀释液: : Dissolve 5.24 g of trisodium phosphate 12-water in 500 mL of water. Add 110 mL of 0.5 M dibasic sodium phosphate aqueous solution and dilute with water to 1000 mL.